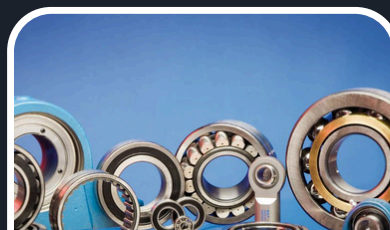




TECHNO TRADE MART™

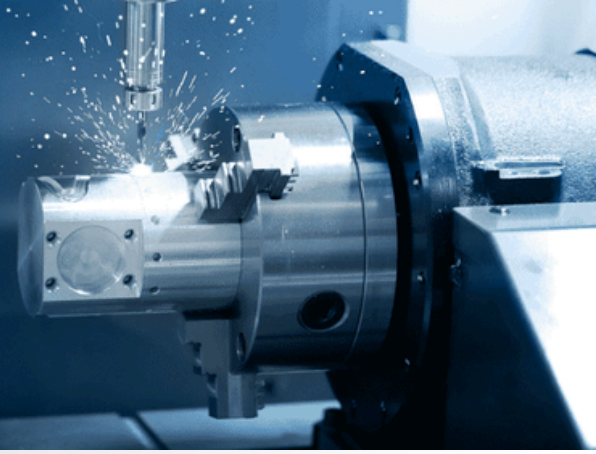


BEARINGS CATALOGUE



☎ 011-69311818, 9470962850
🌐 New Delhi, Jamshedpur, Nagpur
📍 www.technotrademart.com
✉ orders@technotrademart.com

About Us.



Techno Trade Mart (A brand under Techgenics insight engineering & Consulting private Limited) is a premier supplier of Bearings, serving businesses across India since 2022. Our commitment to quality and customer satisfaction has positioned us as a trusted partner for a wide range of industries. Techno Trade Mart's key product offerings include Domestic and International.

Our Missions

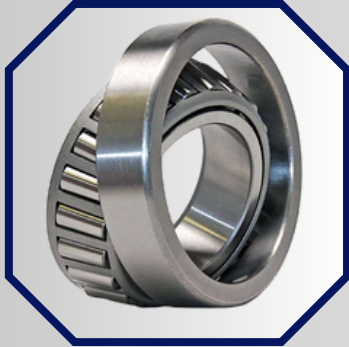
At Techno Trade Mart, our mission is to provide top-quality industrial solutions that enhance operational efficiency and productivity. We aim to deliver exceptional value to our customers through our comprehensive product range and unmatched service.

Vision

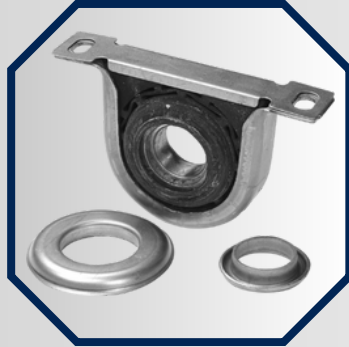
At Techno Trade Mart, our vision is to be the foremost provider of industrial equipment, spare parts, machines, and tools across India, recognized for our unwavering commitment to quality, innovation, and customer satisfaction.

- **Excellence in Quality:** To consistently deliver superior products that meet the highest industry standards, ensuring our customers can rely on our offerings for their most critical operations.
- **Innovation and Advancement:** To lead the industry by adopting cutting-edge technologies and innovative solutions that enhance productivity and efficiency in industrial processes.
- **Nationwide Reach:** To expand our footprint across every corner of India, ensuring that businesses, regardless of their location, have access to the best industrial solutions.
- **Customer-Centric Approach:** To build lasting relationships with our customers by understanding their unique needs and providing tailored solutions that drive their success.
- **Empowerment Through Knowledge:** To empower our customers with the knowledge and support they need to make informed decisions and achieve optimal outcomes in their operations.

Bearings Category



Tapered Roller Bearings



Centre Support Bearings



Miniature Bearings



Bearing Kits / Combo Kits



Deep Groove Ball Bearing



Ball Bearings



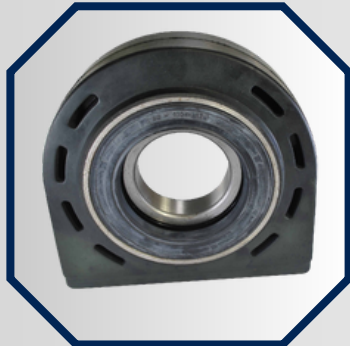
Thrust Bearings



Wheel Repair kit



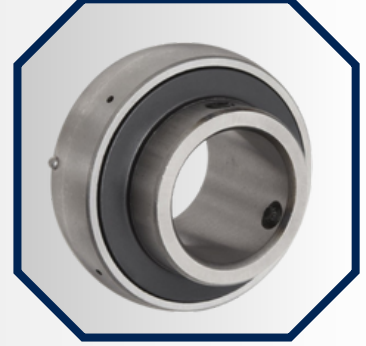
Clutch Release Bearing



Center joint Bearings



Wheel hub Bearings



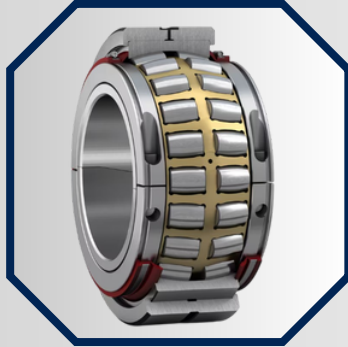
Unit Bearings



Bearings Category



Cylindrical Roller Bearings



Spherical Roller Bearings



Adaptre Sleeves



Grease

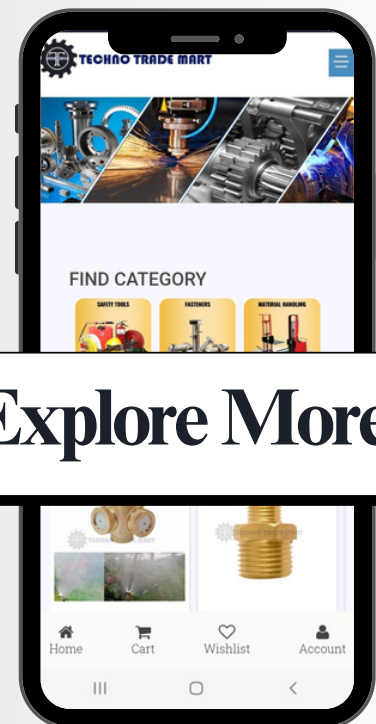
Our Partners

TIMKEN

SKF

nbc

flexible solutions



Explore More 



www.technotrademart.com





Market Part Number	MRP `
30203	434
30204	449
30205	489
30206	631
30207	667
30208	977
30209	738
30210	828
30211	1,397
30212	1,364
30213	1,983
30214	1,777
30215	2,138
30221	11,781
30302	504
30303	923
30305	669
30306	807
30307	1,094
30308	1,056
30309	
30310	2,493
30311	3,884
30312	2,725
30314	7,701
30315	13,168
30318	24,285
30319	33,934
31307	1,225
31308	2,033
31309	2,806
31312	3,361
31313	6,873
32004	616
32006	552
32007	677
32008	784
32009	856
32010	938
32011	1,249
32012	1,404
32013	1,582
32014	1,905
32015	4,988

Market Part Number	MRP `
32016	3,063
32017	6,123
32020	3,054
32021	5,481
32022	13,652
32024	17,445
32205	614
32206	769
32207	871
32208	852
32210	1,146
32211	1,159
32212	1,731
32213	2,153
32214	2,176
32215	3,705
32216	2,561
32217	4,059
32218	5,436
32219	6,835
32220	17,311
32221	6,017
32222	12,165
32304	1,337
32305	928
32306	3,011
32307	1,175
32308	1,227
32310	1,918
32311	4,071
32313	4,090
32314	5,718
33010	1,265
33012	6,432
33013	1,602
33019	3,222
33020	4,481
33021	11,705
33111	1,374
33112	1,978
33115	2,663
33116	3,585
33117	5,368
33118	5,966



Tapered Roller Bearings

TIMKEN



Market Part Number	MRP `
33205	1,158
33207	1,924
33209	4,234
33210	1,745
33211	1,974
33213	2,116
33214	2,502
33215	3,067
33275	4,115
02872-02820	944
11590-11520	2,255
13318-13175	4,323
14131-14276	3,255
15123-15245	972
1988-1922	569
24780-24720	957
25572-25520	1,364
25577-25522	1,467
25584A- 25520	1,625
25590-25520	1,155
25590-25523	1,172
25877-25820	805
2789-2729	931
28580-28521	1,099
29675-29620	2,822
29685-29620	2,254
31594-31520	1,190
32005	772
320-32X	520
32209	985
32309	1,657
33889-33822	3,059
34306-34478	3,134
3490-3420	3,417
3585-3525	2,456
368-362A	2,091
369S- 362A	1,326
37425-37625	2,028
37431A- 37625	1,691
3780-3720	1,456
3782-3720	1,920
38 7A-382	1,556
39581-39520	2,880
39585-39520	4,103

Market Part Number	MRP
39590-39520	7,417
395S- 394A	2,592
3982- 3920	2,012
3984-3920	1,776
3994-3920	2,678
42687-42620	4,751
44143-44348	3,134
46 2A-4 53X	1,673
47487-J47420X	1,968
47490-47420	3,230
47890-47820	2,957
482-472	1,848
497-492A	3,594
497-493	2,954
535-532A	1,867
5039-532	1,597
55200C-55437	3,201
55206C-55437	3,164
55212C-55437	4,058
56426-56650	32 ,695
566-563	1,936
567-563	1,979
580-VR/572-VR	1,962
59 4A-5 92A	3,136
63 79-63 20	3,436
65237-65500	4,418
6580- 6535	7,306
683-672	3,888
685-672	4,808
72200C-72487	5,137
72212AC-72487	1,946
72225C-72487	3,930
749-742	6,201
78215C-78537	9,574
78225C-78551	7,038
9278- 9220	7,347
H715334-H715311	7,941
H715343-H715311	7,563
H913810-H913849	12,865
HM212049-HM212010	3,067
HM218248-HM218210	2,756
HM518445-HM518410	2,933
HM803146-HM803110	1,781
HM803149 -HM 803110	2,130





Market Part Number	MRP
HM804846-HM804810	2,266
HM807046-HM807010	4,703
HM813843-HM813810	7,147
HM88649-HM88610	1,992
HM89446-HM89410	2,548
HM89449-HM89410	1,462
HM903249-HM903210	1,803
HM911244-HM911216	3,029
JD6549-JD6510	6,698
JF4049-JF4010	3,575
JH211749-JH211710	4,596
JHM513640-JHM513615	2,486
JK151547	812
JL819349-JL819310	2,957
JLM104948-JLM104910	1,378
JLM506849-JLM506810	971
JLM710949C - JLM 710910	2,146
JLM714149 - JLM714110	2,631
JM511946 - JM511910	1,645
JM612949 - JM612910	1,932
JM716649 - JM716610	3,656
JM720249 - JM720210	7,906
JP12049A - JP1 2 0 1 0	3,758
KJL69349 - KJL69310	1,698
L44649 - L44610	2,237
L68149 - L68116	1,969
LM104949 - JLM104910	1,013
LM104949 - LM104911	1,340
LM11749 - LM11710	509
LM11949 - LM11910	623
LM29749 - LM29711	3,367
LM48548 - LM48510	546
LM501349 - LM501310	763
LM501349 - LM501314	973
LM603049 - LM603011	953
LM603049 - LM603012	949
LM67048 - LM67010	885
LM806649 - LM806610	1,889
M12649 - M12610	639
M802048-M802011	1,515
M86647-M86610	1,093
M86649-M86610	989
M88048-M88010	954
M903345-M903310	1,709

Market Part Number	MRP
NP027538-NP510716	1,365
NP101379 (CONE - SINGLE)	3,634
NP224174-6320	4,309
NP242732-NP611140	10,115
NP269802-NP080359	8,903
NP283244-NP748236	800
NP360988-NP458182	1,053
NP486079-JH211710	6,613
NP528245-NP891538	3,168
NP642634-9220	4,611
NP723977-NP751735	20,357
NP784953-NP396414(HM803	1,984
NP799388(77213 with spacer)	8,276
NP799388(77213 without spacer)	3,476
NP909358(344-332)	978
N P930036-NP193660	8,422
NP966883-NP759177	1,060
SET1360	7,183
T149	1,180
T158	1,179
T199	911
U298-U261L	1,492
U399-U360L	1,579
U497-U460L	2,322
XC2405CK	1,326

Centre Support Bearings

Market Part Number	MRP
HB6010A-2RS	960
HB6011A-2RS	1,007
HB6011C-2RS	2,053
HB6013CH	1,647
B6207D-2RS	766
HB6211AHB	1,845
6211B	1,575
HB6211B-2RS	1,822



Bearing Kits / Combo Kits

TIMKEN



Kit Description	Bearing Part No.	Kit Qty	MRP
KIT394818	580/572	2 PCS	3,209
KIT394819	JHM 513 6 4 0 - 615	2 PCS	4,362
KIT394820	6379-6320	2 PCS	5,701
KIT394821	3 3 019-VR	2 PCS	5,532
KIT394822	683-VR/672-VR	2 PCS	5,874
KIT394823	3 2 214	2 PCS	3,862
KIT39 4824	566-563	2 PCS	3,322
KIT394825	32308-VR	4 PCS	4,182
KIT39 4826	535-532A	2 PCS	3,133
KIT394827	32217-VR	2 PCS	6,250
KIT472972	539-532	2 PCS	2,694
KIT472974	NP224174	2 PCS	7,469
KIT479886	32212	2 PCS	3,105
KIT481893	33215	2 PCS	5,492
KIT482872	567-563	2 PCS	3,612
KIT482874	3984 -3920	2 PCS	3,239
KIT485999	32309	2 PCS	2,967
KIT287666	LM501349-LM501310	4 PCS	2,784
KIT335895	2789-2729	2 PCS	1,700
KIT362497	320-32X	4 PCS	1,964
KIT381686	1988-1922	4 PCS	2,008
KIT607464	3780-3720	2 PCS	2,572
KIT628123	NP909358 (344-332)	2 PCS	1,786
KIT677214	33111	2 PCS	2,4 26
KIT809831	37425-37625	2 PCS	3,538
KIT228935	33213	2 PCS	4,516
KIT334806	HM518445-HM518410	2 PCS	5,773
KIT398360	33210	2 PCS	2,910
KIT434502	33020	2 PCS	7,474
KIT578849	497-493	2 PCS	5,394
KIT666534	33214	2 PCS	4,823
KIT719970	33116	2 PCS	5,981
KIT787375	HM218248-HM218210	2 PCS	5,424
KIT131321	320 / 32X / 30204	2 PCS	1,891
KIT238164	32207	2 PCS	1,624

Wheel Repair Kit

Market Part Number	MRP
SET1376	29,049
SET2312	24,184
SET2314	32,913





Market Part Number	MRP `
TRUKON GREASE MP3 - R - 100 GM	48
TRUKON GREASE MP3 - R - 200 GM	93
TRUKON GREASE MP3 - 1/2 KG	234
TRUKON GREASE MP3 - 1 KG	443
TRUKON GREASE MP3 - 2 KG	893
TRUKON GREASE MP3 - 3 KG	1,300
TRUKON GREASE MP3 - 5 KG	2,145
TRUKON GREASE MP3 - 7 KG	2,952
TRUKON GREASE MP3 - 20 KG	8,428
TRUKON GREASE MP3 - 180 KG	74,691

Market Part Number	MRP `
TPAG GREASE 100K - 1/2 KG	419
TPAG GREASE 100K - 1 KG	819
TPAG GREASE 100K - 2 KG	1,632
TPAG GREASE 100K - 3 KG	2,419
TPAG GREASE 100K - 5 KG	3,959
TPAG GREASE 100K - 7 KG	5,473
TPAG GREASE 100K - 10 KG	7,731
TPAG GREASE 100K - 20 KG	14,960
TPAG GREASE 100K - 182 KG	1,34,503

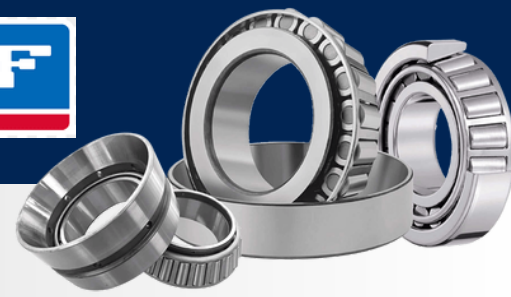
Market Part Number	MRP `
TRUKON GREASE 50K - 1/2 KG	312
TRUKON GREASE 50K - 1 KG	590
TRUKON GREASE 50K - 2 KG	1,191
TRUKON GREASE 50K - 3 KG	1,733
TRUKON GREASE 50K - 5 KG	2,860
TRUKON GREASE 50K - 7 KG	3,936
TRUKON GREASE 50K - 20 KG	11,237
TRUKON GREASE 50K - 180 KG	99,588

Market Part Number	MRP `
FLEETULTRA GREASE 150K - 1/2 KG	440
FLEETULTRA GREASE 150K - 1 KG	857
FLEETULTRA GREASE 150K - 2 KG	1,706
FLEETULTRA GREASE 150K - 3 KG	2,531
FLEETULTRA GREASE 150K - 5 KG	4,142
FLEETULTRA GREASE 150K - 7 KG	5,732
FLEETULTRA GREASE 150K - 20 KG	15,663
FLEETULTRA GREASE 150K - 182 KG	141,048

Market Part Number	MRP `
TPAG GREASE 75K - 100 GM	69
TPAG GREASE 75K - 200 GM	136
TPAG GREASE 75K - 1/2 KG	353
TPAG GREASE 75K - 1 KG	690
TPAG GREASE 75K - 2 KG	1,353
TPAG GREASE 75K - 3 KG	1,988
TPAG GREASE 75K - 5 KG	3,247
TPAG GREASE 75K - 7 KG	4,454
TPAG GREASE 75K - 10 KG	6,300
TPAG GREASE 75K - 20 KG	12,472
TPAG GREASE 75K - 182 KG	1,11,225



Deep Groove Ball Bearing



SKF India Limited – Industrial Market

Maximum Retail Price list for SKF domestic industrial products

(Not to be photocopied and/or given to others without permission of the issuing authority)

- Approved by: CS • Issued by: SP
- MRP 2024, Edition No. 1, Effective from 1st May, 2024

MRP

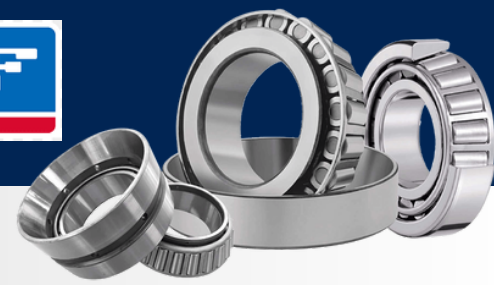
Designation	MRP
16008	567
1838001/C3	392
1838001/C4	385
1888180	1,651
306445 C	1,239
6000	186
6000/C3	186
6000/C3D8VG043	186
6000-2RS1	260
6000-2RS1/C3	260
6000-2Z	202
6000-2Z/C3	202
6000-Z	204
6000-Z/C3	204
6001	181
6001/C3	181
6001-2RS1	263
6001-2RS1/C3	263
6001-2RSH	267
6001-2Z	216
6001-2Z/C3	216
6001-Z	206
6001-Z/C3	206
6002	202
6002/C3	202
6002/C3H	202
6002-2RS1	283
6002-2Z	253
6002-2Z/C3	253
6002-RS1	263
6002-Z	227
6002-Z/C3	227
6003	245
6003/C3	245
6003/C3HD8	245
6003-2RS1	336
6003-2Z	284
6003-2Z/C3	284
6003-Z	266
6003-Z/C3	266
6004	266
6004/C3	266
6004/CNH8S0VG043	268

Designation	MRP
6200	172
6200/C3	172
6200-2RS1	253
6200-2RS1/C3	253
6200-2Z	219
6200-2Z/C3	219
6200-RS1	208
6200-Z	194
6200-Z/C3	194
6201	133
6201/C3	133
6201-2RS1	212
6201-2RS1/C3	212
6201-2RS1/C3LLHT23	210
6201-2Z	189
6201-2Z/C3	189
6201-RS1	162
6201-Z	165
6201-Z/C3	165
6202	158
6202/C3	158
6202/HN3C3	151
6202/S00VG043	149
6202/VG043	178
6202-2RS1	226
6202-2RS1/C2LHT23	226
6202-2RS1/C3	226
6202-2RSH/C3	226
6202-2Z	207
6202-2Z/C3	207
6202-2Z/MT33F9	198
6202-RS1	196
6202-RS1/C3	196
6202-RS1/MT33F9VG043	198
6202-Z	181
6202-Z/C3	181
6203	207
6203/C3	207
6203-2RS1	275
6203-2RS1/C3	275
6203-2RS1/C3GJNVP101	269
6203-2RS1/C3HTF7	269
6203-2Z	258

Designation	MRP
6004/HN3	311
6004-2RS1	341
6004-2RS1/C3	341
6004-2Z	320
6004-2Z/C3	320
6004-RS1	296
6004-Z	292
6004-Z/C3	292
6005	300
6005/C3	300
6005-2RS1	382
6005-2RS1/C3	382
6005-2Z	355
6005-2Z/C3	355
6005-RS1	334
6005-Z	330
6005-Z/C3	330
6006	386
6006/C3	386
6006-2RS1	466
6006-2RS1/C3	466
6006-2Z	460
6006-2Z/C3	460
6006-RS1/C3	417
6006-Z	425
6007	412
6007/C3	412
6007-2RS1	537
6007-2RS1/C3	537
6007-2Z	538
6007-RS1	469
6007-RS1/C3	469
6010	907
6010/C3	907
6010-2RS1	1,044
6010-2Z	1,028
61804/C2LHT23	401
61805	336
61902/C3	312
61902-2Z	324
61902-Z/C3	326
61905/C3	346
61906/D8S0VB578	379



Deep Groove Ball Bearing



SKF India Limited – Industrial Market

Maximum Retail Price list for SKF domestic industrial products

(Not to be photocopied and/or given to others without permission of the issuing authority)

- Approved by: CS • Issued by: SP
- MRP 2024, Edition No. 1, Effective from 1st May, 2024

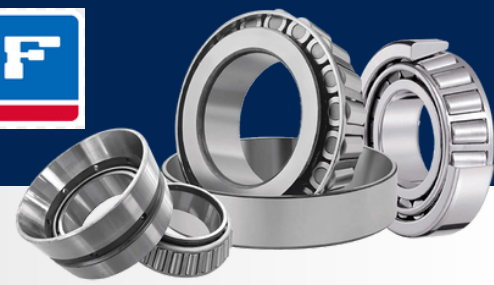
MRP

Designation	MRP
6203-2Z/C3	258
6203-RS1	214
6203-Z	224
6203-Z/C3	224
6204	298
6204 N	298
6204/C3	298
6204/D8	295
6204-2RS1	397
6204-2RS1/C3	397
6204-2RS1N	379
6204-2Z	364
6204-2Z/C3	364
6204-RS1	333
6204-RS1/C3	333
6204-Z	330
6204-Z/C3	330
6204-Z/HN3	321
6204-Z/HN3C3	321
6205	397
6205 E/HN3VK374	398
6205 NR/C3	398
6205/C3	394
6205/HN3	398
6205-2RS1	514
6205-2RS1/C3	514
6205-2Z	481
6205-2Z/C3	481
6205-RS1	439
6205-RS1/C3	439
6205-Z	436
6205-Z/C3	436
6205-Z/HN3C3H	436
6206	602
6206 N	602
6206 N/C3	602
6206 NR/C3	602
6206 TN9/C3VQ488	598
6206/C3	602
6206/HN3C3H	590
6206-2RS1	691
6206-2RS1/C3	691
6206-2RS1/C3MT33	679

Designation	MRP
6206-2Z	675
6206-2Z/C3	675
6206-RS1	633
6206-RS1/C3	633
6206-Z	646
6206-Z/C3	646
6207	592
6207 N	566
6207 NR	575
6207 NR/C3	575
6207/C3	592
6207/C3D8	575
6207/D8	575
6207-2RS1	719
6207-2RS1/C3	719
6207-2Z	679
6207-2Z/C3	679
6207-RS1	623
6207-RS1/MT	673
6207-Z	644
6207-Z/C3	644
6208	714
6208 N	707
6208 N/C3	707
6208 NR	731
6208 NR/C3	731
6208/C3	714
6208-2RS1	855
6208-2RS1/C3	855
6208-2Z	814
6208-2Z/C3	814
6208-2Z/C3HTVT530	772
6208-RS1	769
6208-Z	753
6208-Z/C3	753
6209	861
6209/C3	861
6209-2RS1	978
6209-2RS1/C3	978
6209-2Z	976
6209-2Z/C3	976
6209-2Z/C3HTVT530	924
6209-Z	896
6209-Z/C3	896

Designation	MRP
6210	905
6210 N	885
6210 NR	933
6210/C3	905
6210-2RS1	1,194
6210-2RS1/C3	1,194
6210-2RS1/C3GJN	1,183
6210-2Z	1,023
6210-2Z/C3	1,023
6210-2Z/C3HTVT530	977
6210-Z	952
6210-Z/C3	952
6211	1,154
6211/C3	1,154
6211-2RS1	1,290
6211-2RS1/HTF7	1,290
6211-2Z	1,314
6211-2Z/C3	1,314
6211-RS1	1,227
6211-Z	1,243
6212	1,350
6212/C3	1,350
6212-2RS1	1,558
6212-2RS1/C3	1,558
6212-2Z	1,486
6212-2Z/C3	1,486
6212-2Z/C3HTVT530	1,472
6212-Z/C3	1,511
6213	1,437
6213/C3	1,437
6213-2RS1/C3	1,585
6213-2Z	1,582
6213-2Z/C3	1,582
6213-2Z/C3HTVT530	1,500
628/D8	189
628-2Z	201
629-2RS1	186
629-2Z	163
629-2Z/C3	163
63/28/C3HN3	803
6301	146
6301/C3	146
6301-2RS1	195

Deep Groove Ball Bearing



SKF India Limited – Industrial Market

Maximum Retail Price list for SKF domestic industrial products

(Not to be photocopied and/or given to others without permission of the issuing authority)

• Approved by: CS • Issued by: SP

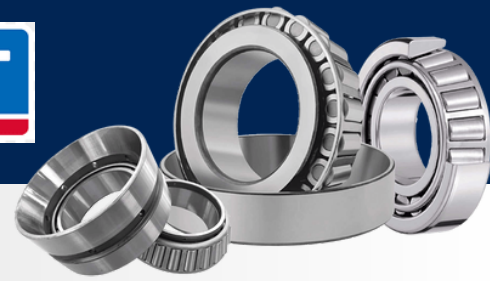
• MRP 2024, Edition No. 1, Effective from 1st May, 2024

MRP

Designation	MRP
16008	567
1838001/C3	392
1838001/C4	385
1888180	1,651
306445 C	1,239
6000	186
6000/C3	186
6000/C3D8VG043	186
6000-2RS1	260
6000-2RS1/C3	260
6000-2Z	202
6000-2Z/C3	202
6000-Z	204
6000-Z/C3	204
6001	181
6001/C3	181
6001-2RS1	263
6001-2RS1/C3	263
6001-2RSH	267
6001-2Z	216
6001-2Z/C3	216
6001-Z	206
6001-Z/C3	206
6002	202
6002/C3	202
6002/C3H	202
6002-2RS1	283
6002-2Z	253
6002-2Z/C3	253
6002-RS1	263
6002-Z	227
6002-Z/C3	227
6003	245
6003/C3	245
6003/C3HD8	245
6003-2RS1	336
6003-2Z	284
6003-2Z/C3	284
6003-Z	266
6003-Z/C3	266

Designation	MRP
6304-2Z	364
6304-2Z/C3	364
6304-RS1/C3	340
6304-Z	328
6304-Z/C3	328
6305	450
6305 N	440
6305 N/C3	440
6305/C3	450
6305/C3H	448
6305-2RS1	519
6305-2RS1/C3	519
6305-2Z	512
6305-2Z/C3	512
6305-RS1	474
6305-Z	483
6305-Z/C3	483
6306	646
6306 N	613
6306 N/C3	613
6306 NR	637
6306/C3	646
6306/HN3CNP	611
6306-2RS1	719
6306-2RS1/C3	719
6306-2Z	712
6306-2Z/C3	712
6306-RS1/MT	667
6306-Z	667
6306-Z/C3	667
6307	730
6307 N	713
6307 N/C3	713
6307 NR	739
6307 NR/C3	739
6307/C3	730
6307/D8	706
6307-2RS1	1,016
6307-2RS1/C3	1,016
6307-2RS1NR/C3	1,035
6307-2Z	822
6307-2Z/C3	822
6307-RS1/MT	1,015

Designation	MRP
6307-Z	770
6307-Z/C3	770
6308	1,070
6308 N	1,048
6308 NR	1,080
6308 NR/C3	1,080
6308/C3	1,070
6308-2RZNR/C3	1,219
6308-2Z	1,191
6308-2Z/C3	1,191
6308-2Z/C3HTVT530	1,130
6308-Z	1,139
6308-Z/C3	1,139
6308-ZN	1,114
6308-ZN/C3	1,114
6308-ZNR	1,089
6309	1,752
6309 N	1,715
6309 N/C3	1,715
6309 NR	1,767
6309 NR/C3	1,767
6309/C3	1,752
6309-2RS1	1,905
6309-2RS1/C3	1,905
6309-2Z	1,888
6309-2Z/C3	1,888
6309-2Z/C3HTVT530	1,807
6309-RS1	1,780
6309-RS1/C3	1,780
6309-Z	1,800
6309-Z/C3	1,800
6310	1,718
6310 N	1,725
6310 N/C3	1,725
6310 NR	1,780
6310 NR/C3	1,780
6310/C3	1,718
6310-2RS1	1,994
6310-2RS1/C3	1,994
6310-2Z	1,876
6310-2Z/C3	1,876
6310-2Z/C3HTVT530	1,829
6310-Z	1,846



SKF India Limited – Industrial Market

Maximum Retail Price list for SKF domestic industrial products

(Not to be photocopied and/or given to others without permission of the issuing authority)

- Approved by: CS • Issued by: SP
- MRP 2024, Edition No. 1, Effective from 1st May, 2024

MRP

Deep Groove Ball Bearing

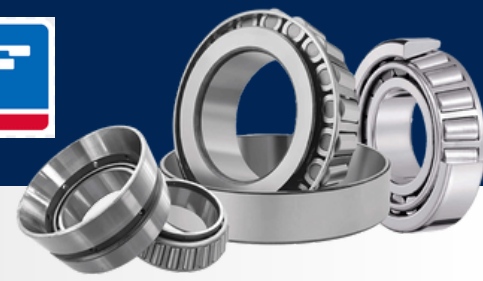
Designation	MRP
6310-Z/C3	1,846
6311	2,590
6311/C3	2,590
6311-2RS1	2,638
6311-2RS1/C3	2,638
6311-2RS1/HTF7	2,714
6311-2Z	2,794
6311-2Z/C3	2,794
6311-Z	2,645
6311-Z/C3	2,645
6312	3,061
6312/C3	3,061
6312-2RS1	3,255
6312-2RS1/C3	3,255
6312-2Z	3,270
6312-2Z/C3	3,270
6312-2Z/C3HTVT530	3,101
6312-Z	3,113
6312-Z/C3	3,113
6313	3,507
6313/C2	3,507
6313/C3	3,507
6313-2RS1	3,703
6313-2RS1/C3	3,703
6313-2Z	3,727
6313-2Z/C3	3,727
6313-2ZNR	3,737
6313-RS1/C3HTVT193	3,464
6313-Z	3,549
6313-Z/C3	3,549
BB1B 420204	136
BB1B 420205	209
BB1B 420206	365

Tapered Roller Bearing

Bearing Type	MRP
02872/2/02820/2/Q	1,012
09067/09195/Q	689
11590/11520	626
15123/15245/Q	681
1888400/Q	2,378
1988/1922/Q	639
24780/24720/Q	889
25572/25520/Q	1,133
25577/2/25523/2/Q	1,151
25580/25522/Q	1,011
25590/2/25520/2/Q	1,251
25590/2/25523/2/Q	1,251
25877/2/25821/2/Q	957
2789/2729/Q	918
28580/2/28521/2/Q	1,216
30203 J2/Q	436
30204 J2/Q	468
30205 J2/Q	497
30206 J2/Q	676
30207 J2/Q	704
30208 J2/Q	1,025
30209 J2/Q	853
30211 J2/Q	1,560
30214 J2/Q	2,060
30215 J2/QCLN	2,191
30302 J2/Q	491
30305 C	727
30306 J2/QCLN	853
30308 J2/Q	1,206
30309 J2/Q	1,689
30312 J2/Q	3,101
31309 J2/QCLN	1,782
31594/2/31520/2	1,291
320/32 X/Q	583
32004 X/Q	603
32006 X/Q	597
32007 X/Q	752
32008 X/Q	837
32010 X/Q	1,001
32012 X/QVB531	1,528
32013 X/QVB533	1,623
32014 X/Q	1,898
32020 X/Q	3,191

Bearing Type	MRP
32205 BJ2/Q	604
32207 J2/Q	980
32210 J2/Q	1,226
32211 J2/Q	1,185
32212 J2/Q	1,724
32213 J2/Q	2,462
32214 J2/Q	2,149
32216 J2/Q	3,204
32217 J2/Q	3,753
32218 J2/Q	5,967
32305 J2/Q	873
32307 J2/Q	1,417
32308 J2/Q	1,322
32309 J2/Q	1,755
32911/Q	1,501
33005/Q	657
33010/Q	1,180
33019/Q	3,354
330201/Q	2,044
330356 B/Q	2,494
330632 C/Q	3,314
33108/U4Q	940
33111/QVB500	1,660
33112/Q	2,004
33215/Q	3,356
344/332/Q	973
3585/3525/Q	1,654
3780/3720/Q	1,877
3782/3720/Q	1,882
387/382 A/Q	1,464
395 A/394 A/Q	1,541
395/394 A/Q	1,728
39580/W/2/39520/2/Q	2,644
39581/39520/Q	2,644
3982/3920/2/Q	2,215
3984/2/3920/2/Q	2,037
399 A/394 A/QVB079	1,677
418/414/Q	1,209
42687/42620	2,158
462/453 X/VB535	1,744
47487/47420 X	2,099
47890/47820/Q	3,005
482/472/Q	1,986

Tapered Roller Bearing



SKF India Limited – Industrial Market

Maximum Retail Price list for SKF domestic industrial products

(Not to be photocopied and/or given to others without permission of the issuing authority)

- Approved by: CS • Issued by: SP
- MRP 2024, Edition No. 1, Effective from 1st May, 2024

Tapered Roller Bearing

Transaction	Quantity
497/492 A/Q	3,428
535/532 A	1,835
539/532 X	1,644
55200 C/55437/QVE807	2,665
566/563/Q	1,969
567/563	2,214
575/572/Q	2,621
580/572/Q	2,021
6379/K-6320/Q	3,748
683/672/Q	3,534
687/672/Q	3,778
72212/2/72487/2/Q	2,096
HM 212049/011	2,530
HM 903249/2/210/2/Q	1,921
LM 11949/910/Q	621
LM 29749 F/711/Q	650
LM 29749/710/QCL7CVA607	772
LM 48548/510/Q	572
LM 501349/310/Q	821
LM 501349/314/Q	1,080
LM 603049/011	1,055
LM 603049/012/Q	794
M 12649/610/Q	684
M 802048/011/Q	1,591
M 86649/2/610/2/Q	1,077
M 88048/010/Q	1,028





MAXIMUM RETAIL PRICE

Effective from 26th July 2023

(As Per Legal Metrology (Packaged Commodities) Rules 2011)

BEARING NO.	MRP in Rs.	CASE Qty.	BEARING NO.	MRP in Rs.	CASE Qty.	BEARING NO.	MRP in Rs.	CASE Qty.
2 WHEELER TWIN PACK BALL BEARINGS			1306K	1166.00	32	20X55X11	382.00	105
6201RS BEARINGS SET	210.00	432	1307	1525.00	26	2201	432.00	270
6204 BEARINGS SET	386.00	168	1307K	1566.00	26	2202	505.00	150
6205 BEARINGS SET	546.00	112	1308	1570.00	22	2202ETN9	487.00	150
6301LLU BEARINGS SET	272.00	210	1308K	1593.00	22	2203	568.00	150
6301LU BEARINGS SET	196.00	210	1309	2036.00	20	2203ETN9RSS	606.00	150
6301Z BEARINGS SET	196.00	210	1309K	2099.00	20	2204	679.00	112
6304 BEARINGS SET	408.00	112	1309K C3	2099.00	20	2205	765.00	100
6305 BEARINGS SET	640.00	48	1310	2483.00	10	2205K	793.00	100
BALL BEARINGS			1310K	2550.00	10	2205RSS	783.00	100
1200	398.00	315	1311	2805.00	8	2206	915.00	44
1202ETN9	409.00	180	1311K	2960.00	8	2206ETNRSS	1015.00	44
1203	422.00	180	1314	4622.00	4	2206K	965.00	44
1204	482.00	128	1315	6719.00	4	2207	1133.00	30
1205ETN9	631.00	100	1315K	6848.00	4	2207K	1182.00	30
1205KTN9	660.00	100	1316	9656.00	6	2208	1352.00	22
1206ETN9	743.00	44	1316K C3	9656.00	6	2208K	1503.00	22
1206KP	773.00	44	1317	11005.00	3	2209	1521.00	18
1207	846.00	36	1318	11451.00	3	2209K	1598.00	18
1207K	910.00	36	1320	19151.00	2	2209K C3	1598.00	18
1208	1024.00	30	16003	397.00	324	2210	1808.00	18
1208 C3	1024.00	30	16003 C3	397.00	324	2210K	1863.00	18
1208K	1075.00	30	16004	404.00	180	2210K C3	1863.00	18
1209ETN9	1288.00	24	16005	370.00	200	2211	2221.00	20
1209KP	1298.00	24	16006	409.00	100	2211K	2221.00	20
1210	1375.00	24	16007	402.00	102	2211K C3	2221.00	20
1210K	1475.00	24	16008	541.00	92	2212	2783.00	10
1211	1661.00	26	16009	646.00	63	2212K	2783.00	10
1211KP	1734.00	26	16010	569.00	60	2213	3352.00	8
1212	2020.00	12	16011	733.00	36	2213K	3352.00	8
1212K	2076.00	12	16012	797.00	26	2215	4344.00	6
1212K C3	2076.00	12	16013	851.00	35	2215K	4344.00	6
1213	2426.00	12	16013 C3	851.00	35	2215K C3	4344.00	6
1213K	2487.00	12	16014	970.00	20	2216	5511.00	6
1213K C3	2487.00	12	T52-16014 C3	970.00	20	2216 C3	5511.00	6
1215	3136.00	8	16015	1052.00	20	2217	6960.00	4
1215K	3238.00	8	16016	1246.00	16	2217K	6960.00	4
1215K C3	3238.00	8	16017	1695.00	8	2301ETN9	704.00	150
1216	3792.00	6	16018	2040.00	8	2305	1291.00	42
1216K	3894.00	6	16019	2320.00	8	2305K	1362.00	42
1217	4103.00	6	16020	2548.00	6	2306	1547.00	30
1217K	4225.00	6	16020M	5180.00	6	2306K	1547.00	30
1217K C3	4225.00	6	16021	2927.00	6	2307	1866.00	18
1218	5623.00	5	16022	3737.00	6	2307K	1866.00	18
1218K	5733.00	5	16024	4507.00	8	2308	2361.00	15
1220	7494.00	4	16024 P6 V3 C2	4642.00	8	2308K	2361.00	15
1220K	7943.00	4	16024M	6216.00	4	2308K C3	2361.00	15
1222	11182.00	3	16026	5231.00	3	2309	3018.00	8
1304	739.00	100	16032M	17678.00	1	2309K	3115.00	8
1304K	772.00	100	1838001	301.00	63	2310	4152.00	8
1305	892.00	44	1838001 C3	301.00	63	2310 C3	4152.00	8



BEARING NO.	MRP In Rs.	CASE Qty.	BEARING NO.	MRP In Rs.	CASE Qty.	BEARING NO.	MRP In Rs.	CASE Qty.
2311	5700.00	6	3212TN	3742.00	8	6000 C3	144.00	240
2311K	5836.00	6	3212ZZ	4472.00	8	6000RS	161.00	240
2311K C3	5836.00	6	3212ZZTN	4241.00	8	6000RSS	168.00	240
2312	6096.00	4	3213	4875.00	7	6000RSS C3	168.00	240
2312K	6302.00	4	3213ZZ	5060.00	7	6000T2XZ C3	190.00	240
2313	7449.00	4	3214	5724.00	5	6000Z	150.00	240
2313K	7599.00	4	3214ZZ	5881.00	5	6000ZZ	154.00	240
2314	8667.00	3	3215	6780.00	5	6000ZZ C3	154.00	240
2314K	8874.00	3	3215ZZ	7174.00	5	6001	132.00	240
2315	10216.00	3	3217	9888.00	3	AST-6001RS	151.00	240
2315K	10216.00	3	3220M	20311.00	1	6001LUAX2V1	148.00	315
2316	18234.00	2	3302	775.00	112	6001RSS	180.00	315
2316 C3	18234.00	2	3302ZZ	855.00	112	6001RSS C3	180.00	315
2316K	18234.00	2	3303	822.00	72	6001Z	137.00	315
2317	19055.00	2	3303ZZ	936.00	72	6001ZZ	143.00	240
2317K	19055.00	2	3304	861.00	72	6001ZZ C3	143.00	315
308D5222	1133.00	72	3304TN	807.00	72	6002	180.00	270
3200	674.00	270	3304ZZ	970.00	72	6002 C3	180.00	270
3200ZZ	736.00	270	3305	1521.00	42	TMB6002	216.00	270
3201	710.00	270	3305TN	1389.00	42	6002LLH B2	315.00	270
3201ZZ	798.00	270	3305ZZ	1750.00	42	6002LLU	218.00	270
3202	729.00	150	3306	2122.00	27	6002LLU C3	218.00	270
3202ZZ	848.00	150	3306TN	2013.00	27	6002LU	204.00	270
3202ZZTN	693.00	150	3306ZZ	2377.00	27	6002Z	196.00	270
3203	768.00	150	3307	2467.00	12	6002Z C3	196.00	270
3203TN	640.00	150	3307TN	2363.00	12	TMB6002Z	244.00	270
3203ZZ	885.00	150	3307ZZ	2700.00	12	6002ZZ	214.00	270
3203ZZTN	735.00	150	3308	2726.00	14	6002ZZ C3	214.00	270
3204	781.00	92	3308 C3	2726.00	14	6003	213.00	180
3204TN	702.00	92	3308TN	2505.00	14	6003 C3	213.00	180
3204ZZ	865.00	92	3308ZZ	2982.00	14	5P6003	296.00	180
3205	787.00	92	3309	3875.00	8	6003LLU	285.00	180
3205TN	709.00	92	3309 C3	3875.00	8	6003LLU C3	285.00	180
3205ZZ	868.00	92	3310	4553.00	8	6003LU	252.00	180
3205ZZTN	811.00	92	3310 C3	4553.00	8	6003Z	230.00	180
3206	1180.00	42	3311	6704.00	4	6003Z C3	230.00	180
3206TN	1053.00	42	3311ZZ-SP	7388.00	4	6003ZZ	247.00	180
3206ZZ	1271.00	42	3312	8094.00	4	6003ZZ C3	247.00	180
3206ZZTN	1211.00	42	3313	9871.00	3	6004	182.00	180
3207	1524.00	30	3314	11374.00	1	6004 C3	182.00	180
3207 C3	1524.00	30	3315	14171.00	1	6004LH	189.00	180
3207TN	1365.00	30	3316	16161.00	1	6004LLH	210.00	180
3207ZZ	1611.00	30	3318TN	25088.00	1	6004LLH C3	210.00	180
3208	2017.00	18	3320M	38986.00	1	6004LLU C3	210.00	180
3208TN	1762.00	18	3322M	59743.00	1	6004Z	193.00	180
3208ZZ	2064.00	18	358D5220	1203.00	92	6004ZZ	205.00	180
3209	2409.00	16	420204 C3	185.00	128	6004ZZ C3	205.00	180
3210	2558.00	18	420205 C3	195.00	144	6005	235.00	128
3210TN	2368.00	18	420206 C3	387.00	63	6005 C3	235.00	128
3210ZZ	2744.00	18	509043	400.00	64	TMB6005	289.00	128
3210ZZTN	2599.00	18	MLS205T2X	800.00	80	6005LH	302.00	128
3211	3079.00	10	60/22LLV	382.00	128	6005LH C3	302.00	128
3211ZZ	3214.00	10	60/22LLV C3	382.00	128	6005LLH	314.00	128
3212	4101.00	8	6000	144.00	240	6005LLH C3	314.00	128



BEARING NO.	MRP in Rs.	CASE Qty.	BEARING NO.	MRP in Rs.	CASE Qty.	BEARING NO.	MRP in Rs.	CASE Qty.
6005N	239.00	128	6011LLU	1047.00	24	6021 C4	5151.00	5
6005N C3	239.00	128	6011LLU C4	1080.00	24	6021ZZ	5563.00	5
6005Z	265.00	128	6011ZZ	987.00	24	6022	6000.00	5
6005ZZ	278.00	128	6012	1164.00	27	6022 C3	6000.00	5
6005ZZ C3	278.00	128	6012RS	1210.00	27	6022ZZ	6497.00	5
6006	345.00	112	6012RSS	1327.00	27	6022ZZ C3	6497.00	5
6006 C3	345.00	112	6012RSS C3	1327.00	27	6024	6692.00	4
SP6006	455.00	166	6012ZZ	1266.00	27	6024 C3	6692.00	4
6006LLU	486.00	112	6012ZZ C3	1266.00	27	6026	8528.00	3
6006LLU C3	486.00	112	6013	1279.00	26	6026 C3	8528.00	3
6006LU	428.00	112	6013 C3	1279.00	26	6026ZZ	9861.00	3
6006N	353.00	112	6013LLU	1407.00	26	6028	10500.00	2
6006T2XLLBRA	486.00	112	6013LLU C3	1407.00	26	6030	14308.00	2
6006ZZ	407.00	112	6013NR	1452.00	16	6030 C3	14308.00	2
6006ZZ C3	407.00	112	6013NR C3	1452.00	16	6030M	26116.00	2
6007	320.00	63	6013Z	1315.00	26	6032	13165.00	2
6007 C3	320.00	63	6013Z C3	1315.00	26	6034	20375.00	1
TMB6007	434.00	63	6013ZZ	1380.00	26	6034M	29785.00	1
6007/25	419.00	63	6014	1606.00	15	6034M C3	29785.00	1
6007/25 C3	419.00	63	6014 C3	1606.00	15	6036	26042.00	1
6007N	359.00	63	6014LLU	1726.00	15	6036M C3	50272.00	1
6007RS	367.00	63	6014LLU C3	1726.00	15	6040	31430.00	1
6007RS C3	367.00	63	6014ZZ	1644.00	15	6040M	43380.00	1
6007RSS	430.00	63	6014ZZ C3	1644.00	15	6044M	47948.00	1
6007SPL	426.00	63	6015	1679.00	16	6044M C3	47948.00	1
6007Z	346.00	63	6015NR	2183.00	10	6048M	51635.00	1
6007ZZ	370.00	63	6015RSS	1968.00	16	6056M	148850.00	1
6007ZZN	448.00	63	6015ZZ	1862.00	16	613963 C3	168.00	180
6008	505.00	44	6015ZZ C3	1862.00	16	62/22	240.00	100
6008 C3	505.00	44	6016	1825.00	10	62/22CX19	350.00	100
6008LLU	602.00	44	T52-6016 C3	1825.00	10	62/28	663.00	64
6008N	545.00	44	6016LLU	2273.00	10	62/28LLHNR C3	871.00	44
6008NR	581.00	63	6016ZZ	2160.00	10	62/28LLU C3	715.00	64
6008ZZ	567.00	44	6016ZZ P6 C3	2160.00	10	62/28NR C3	847.00	44
6008ZZ C3	567.00	44	6017	2382.00	8	6200	121.00	504
6009	567.00	42	6017 C3	2382.00	12	6200 C3	121.00	504
6009 C3	567.00	42	6017RS	2718.00	8	6200M	125.00	504
6009LLU	682.00	42	6017RSS C3	2831.00	8	6200RS	175.00	504
6009LLU C3	682.00	42	6017ZZ	2740.00	8	6200RS C3	175.00	504
6009LLUNR	716.00	30	6017ZZ C3	2740.00	8	6200RSS	194.00	504
6009LU	640.00	42	6018	3172.00	6	6200RSS C3	194.00	504
6009N	594.00	42	6018Z	3493.00	6	6200Z	145.00	504
6009NR	627.00	30	6018ZZ	3385.00	6	6200Z C3	145.00	504
6009Z	631.00	42	6018ZZ C3	3385.00	6	6200ZZ	157.00	504
6009ZZ	654.00	42	6019	3392.00	6	6200ZZ C3	157.00	504
6009ZZ C3	654.00	42	6019ZZ	3939.00	6	6201	100.00	324
6010	667.00	30	6019ZZ C3	3939.00	6	6201 C3	100.00	324
6010 C3	667.00	30	6020	3621.00	6	6201LUAX2V1	171.00	324
6010LLU	784.00	30	6020 C3	3621.00	6	6201N	104.00	324
6010NR	809.00	32	6020 C4	3803.00	6	6201RS	152.00	324
6010Z	714.00	30	6020ZZ	4321.00	6	6201RSS	182.00	324
6010ZZ	768.00	30	6020ZZ C3	4321.00	6	6201RSS C3	182.00	324
6011	879.00	24	6021	4907.00	5	6201X7LU	160.00	324
6011 C3	879.00	24	6021 C3	4907.00	5	6201Z	121.00	324



BEARING NO.	MRP In Rs.	CASE Qty.	BEARING NO.	MRP In Rs.	CASE Qty.	BEARING NO.	MRP In Rs.	CASE Qty.
62012 C3	121.00	324	6205LLU C3	393.00	100	6208ZZ	680.00	30
62012UAX2V1	171.00	324	TMB6205LLU	485.00	100	6208ZZ C3	680.00	30
62012Z	139.00	324	6205LU	362.00	100	TMB6208LLU	987.00	30
62012Z C3	139.00	324	6205LU C3	362.00	100	6209	675.00	24
6202	105.00	180	6205N	357.00	100	6209 C3	675.00	24
6202 C3	105.00	180	6205NR	405.00	39	6209K	706.00	24
TMB6202	140.00	180	6205Z	361.00	100	6209LLU	814.00	24
6202LLU	191.00	180	6205Z C3	361.00	100	6209LLU C3	814.00	24
6202LLU C3	191.00	180	AST-6205CX19Z	400.00	100	6209LU	774.00	24
6202LLUN	225.00	180	6205ZNR	457.00	65	6209N	733.00	24
6202LU	168.00	180	6205ZSPL	372.00	100	6209NR	796.00	24
6202LUAX2V1	198.00	180	6205ZZ	387.00	100	6209Z	750.00	24
6202T2XZ C3	166.00	180	6205ZZ C3	387.00	100	6209Z C3	750.00	24
6202X19	146.00	180	AST-6205CLLUN	440.00	100	6209ZN	777.00	24
6202Z	138.00	180	6206	426.00	44	6209ZZ	791.00	24
6202Z C3	138.00	180	6206 C3	426.00	44	6209ZZ C3	791.00	24
6202ZUAX2V1	185.00	180	AST-6206C	440.00	44	6210	717.00	24
6202ZZ	148.00	180	6206N	461.00	44	6210 C3	717.00	24
6202ZZ C3	148.00	180	6206NR	519.00	44	6210K	766.00	24
6203	138.00	180	6206NR C3	519.00	44	6210LLU	899.00	24
6203 C3	138.00	180	6206RS	509.00	44	6210LLU C3	899.00	24
ML6203	165.00	180	6206RSS	564.00	44	6210LUNR	1002.00	20
TMB6203A/42	262.00	180	6206RSS C3	564.00	44	6210N	748.00	24
6203LLU	211.00	180	6206Z	466.00	44	6210NR	823.00	20
6203LLU C3	211.00	180	6206Z C3	466.00	44	6210Z	810.00	24
TMB6203LLU	290.00	180	6206ZZ	505.00	44	6210Z C3	810.00	24
6203LU	188.00	180	6206ZZ C3	505.00	44	6210ZN	862.00	24
TMB6203A/42LU	301.00	180	6207	492.00	32	6210ZNR	937.00	20
6203LUAX2V1	214.00	180	6207 C3	492.00	32	6210ZZ	851.00	24
6203Z	163.00	180	6207LLU	623.00	32	6210ZZ C3	851.00	24
6203Z C3	163.00	180	6207LLU C3	623.00	32	6210ZZ C4	890.00	24
SP6203Z	264.00	180	6207LU	568.00	32	6210ZZN	878.00	24
6203ZZ	183.00	180	6207N	557.00	32	6210ZZNR	952.00	20
6203ZZ C3	183.00	180	6207NR	635.00	42	TM6210LUNR	1100.00	20
6204	220.00	128	6207RO	530.00	32	6211	934.00	26
6204 C3	220.00	128	6207Z	519.00	32	6211 C3	934.00	26
AST-6204 C3	233.00	128	6207Z C3	519.00	32	6211K	990.00	26
TMB6204 C3	281.00	128	6207ZN	559.00	66	6211LLU	1229.00	26
6204LLU	293.00	128	6207ZZ	583.00	32	6211LLU C3	1229.00	26
6204LLU C3	293.00	128	6207ZZ C3	583.00	32	6211LU	1112.00	26
TMB6204LLU C3	372.00	128	6208	602.00	30	6211N	1037.00	26
6204LU	263.00	128	6208 C3	602.00	30	6211NR	1128.00	24
TMB6204RS	322.00	128	TMB6208	744.00	30	6211RO	981.00	26
6204N	246.00	128	6208K	650.00	30	6211Z	1037.00	26
6204SPL	273.00	128	6208LLU	706.00	30	6211Z C3	1037.00	26
6204Z	252.00	128	6208LLU C3	706.00	30	6211ZN	1138.00	26
6204Z C3	252.00	128	TMB6208LLU	839.00	30	6211ZNR	1237.00	24
6204ZZ	263.00	128	6208LU	669.00	30	6211ZZ	1101.00	26
6204ZZ C3	263.00	128	6208N	629.00	30	6211ZZ C3	1101.00	26
6205	320.00	100	6208NR	689.00	24	6212	917.00	12
6205 C3	320.00	100	6208NR C3	689.00	24	6212 C3	917.00	12
TMB6205	469.00	100	6208Z	658.00	30	ML6212	1180.00	30
6205LLHT2X V3	410.00	100	6208Z C3	658.00	30	6212K	952.00	12
6205LLU	393.00	100	6208ZN	692.00	30	6212KLLU	1374.00	12





BEARING NO.	MRP in Rs.	CASE Qty.	BEARING NO.	MRP in Rs.	CASE Qty.	BEARING NO.	MRP in Rs.	CASE Qty.
6212LLU	1282.00	12	6220	5781.00	4	63/28 C3	866.00	44
6212LLU C3	1282.00	12	6220 C3	5781.00	4	SP63/28	934.00	44
6212LU	1146.00	12	62201RSS	275.00	270	SP63/28 C3	934.00	44
6212N	1095.00	12	62202RSS	285.00	150	TMB63/28	1052.00	44
6212NR	1279.00	14	62203RSS	322.00	150	63/28LLU	992.00	44
6212RO	969.00	12	62204RSS	417.00	112	63/28LLU C3	992.00	44
6212Z	1008.00	12	62205RSS	551.00	92	63/28LLUN	1068.00	44
6212Z C3	1008.00	12	62206RSS	772.00	44	63/28LLUN C3	1068.00	44
6212ZNR	1286.00	14	62207RSS	898.00	30	63/28LU	941.00	44
6212ZZ	1057.00	12	6220K	5781.00	4	63/28LU C3	941.00	44
6212ZZ C3	1057.00	12	6220ZZ	6287.00	4	63/28N	1012.00	44
6213	1243.00	12	6221	7261.00	2	63/28X19N	1060.00	44
6213 C3	1243.00	12	6221 C3	7261.00	2	TM63/32LLHAN C3	980.00	44
6213N	1309.00	12	6221ZZ	7842.00	2	6300	193.00	180
6213NR	1391.00	8	6222	9045.00	3	6300 C3	193.00	180
6213RSS	1556.00	12	6222 C3	9045.00	3	63005LLH	852.00	112
6213Z	1320.00	12	6222K	9907.00	3	6300LLU	253.00	180
6213Z C3	1320.00	12	6224	11551.00	2	6300LLU C3	253.00	180
6213ZN	1400.00	12	6224 C3	11551.00	2	6300LU	224.00	180
6213ZNR	1459.00	8	6224M C3	17145.00	2	6300LU C3	224.00	180
6213ZZ	1370.00	12	6226	12190.00	2	6300Z	213.00	180
6213ZZ C3	1370.00	12	6226 C3	12190.00	2	6300ZZ	230.00	180
TMB6213/125RSS	2307.00	10	6226M	18490.00	2	6300ZZ C3	230.00	180
6214	1339.00	6	6226M C3	18490.00	2	6301	154.00	180
6214 C3	1339.00	6	6228	13744.00	1	6301 C3	154.00	180
6214ZZ	1913.00	6	6228 C3	13744.00	1	ML6301	170.00	180
6214ZZ C3	1913.00	6	6228M	23508.00	1	6301LLU	197.00	180
6215	1468.00	8	6228M C3	23508.00	1	6301LLU C3	197.00	180
6215 C3	1468.00	8	6230	17528.00	1	6301LU	176.00	180
6215K	1518.00	8	6230 C3	17528.00	1	6301Z	165.00	180
6215KRSS	2561.00	8	6230M	37240.00	1	6301Z C3	165.00	180
6215LLU	2004.00	8	6232	20753.00	1	6301ZZ	193.00	180
6215ZZ	1840.00	8	6232 C3	20753.00	1	6302	211.00	180
6215ZZ C3	1840.00	8	6232M	64920.00	1	6302 C3	211.00	180
6216	2596.00	6	6234 C3	26940.00	1	ML 6302	217.00	180
6216 C3	2596.00	6	6234M C3	70410.00	1	6302RS	270.00	180
TS2-6216 C3	2596.00	6	6236	32180.00	1	6302RSS	307.00	180
6216ZZ	3025.00	6	6236 C3	32180.00	1	6302RSS C3	307.00	180
6216ZZ C3	3025.00	6	6236M	85062.00	1	6302Z	246.00	180
6217	2921.00	6	6236M C3	85062.00	1	6302Z C3	246.00	180
6217 C3	2921.00	6	6240M	116640.00	1	6302ZZ	269.00	180
6217K	3173.00	6	6240M C3	116640.00	1	6302ZZ C3	269.00	180
6217ZZ	3650.00	6	6244M	151259.00	1	6303	281.00	128
6217ZZ C3	3650.00	6	6244M C3	151259.00	1	6303LLU	353.00	128
6218	3619.00	5	6248M	183394.00	1	6303LLU C2	353.00	128
6218 C3	3619.00	5	6248M C3	183394.00	1	6303LLU C3	353.00	128
6218LLU	3891.00	5	6256M C3	250503.00	1	6303LU	322.00	128
6218Z	3731.00	5	62305-2RS1	483.00	42	6303Z	309.00	128
6218ZZ	3918.00	5	ML63/18LLU	433.00	60	6303ZZ	327.00	128
6218ZZ C3	3918.00	5	ML63/18LLU C3	433.00	60	6303ZZ C3	327.00	128
6219	4827.00	4	63/22	264.00	64	6304	262.00	100
6219 C3	4827.00	4	63/22C	264.00	64	6304 C3	262.00	100
6219ZZ	5567.00	4	63/22SPL	306.00	70	TMB6304	465.00	100
6219ZZ C3	5567.00	4	63/28	866.00	44	6304/22	298.00	100



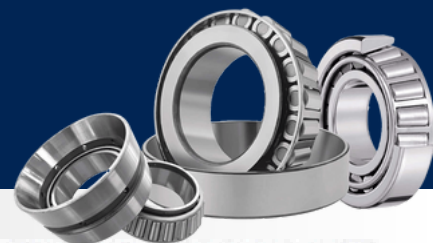
BEARING NO.	MRP In Rs.	CASE Qty.	BEARING NO.	MRP In Rs.	CASE Qty.	BEARING NO.	MRP In Rs.	CASE Qty.
6304/22MLLU	333.00	100	6307ZNR	729.00	26	6311LU	2230.00	8
6304N	301.00	100	6307ZZ	658.00	26	6311LU C3	2230.00	8
6304N C3	301.00	100	6307ZZ C3	658.00	26	6311Z	2151.00	8
6304RS	327.00	100	6308	876.00	22	6311Z C3	2151.00	8
6304RSS	373.00	100	6308 C3	876.00	22	6311ZZ	2255.00	8
6304RSS C2	373.00	100	6308LLH	1057.00	22	6311ZZ C3	2255.00	8
6304RSS C3	373.00	100	6308LLU	1057.00	22	6312	2438.00	6
6304Z	296.00	100	6308LLU C3	1057.00	22	6312 C3	2438.00	6
6304Z C3	296.00	100	CR-6308CT2XLLU	1187.00	20	6312LLU C3	2896.00	6
6304ZZ	316.00	100	6308LU	986.00	22	6312RSS	2896.00	6
6304ZZ C3	316.00	100	6308N	927.00	22	6312Z	2644.00	6
6305	344.00	44	6308N C3	927.00	22	6312Z C3	2644.00	6
6305 C3	344.00	44	6308NR	1006.00	20	6312ZZ	2735.00	6
6305CS	350.00	44	6308RO	915.00	22	6312ZZ C3	2735.00	6
6305CS LLU C3	440.00	44	6308RO C3	915.00	22	6313	2667.00	6
6305CSZ	400.00	44	6308Z	966.00	22	6313 C3	2667.00	6
6305LLU	434.00	44	6308Z C3	966.00	22	6313LLU	3005.00	6
6305LLU C3	434.00	44	6308ZN	1053.00	22	6313LLU C3	3005.00	6
6305LU	406.00	44	6308ZNR	1103.00	22	6313LU	2712.00	6
6305N	364.00	44	6308ZZ	1002.00	22	6313LU C3	2712.00	6
6305NR	424.00	44	6308ZZ C3	1002.00	22	6313Z	2702.00	6
6305Z	370.00	44	6308ZZNR	1176.00	20	6313Z C3	2702.00	6
6305Z C3	370.00	44	6309	1193.00	20	6313ZZ	2982.00	6
6305ZZ	393.00	44	6309 C3	1193.00	20	6313ZZ C3	2982.00	6
6305ZZ C3	393.00	44	ML6309	1260.00	16	6314	3442.00	5
6306	527.00	32	6309LLU	1446.00	20	6314 C3	3442.00	5
6306 C3	527.00	32	6309LLU C3	1446.00	20	6314LLU C3	4026.00	5
TM6306/25T2XLLUN	643.00	32	6309LU	1379.00	20	6314RSS	4026.00	5
6306LLU	634.00	32	6309LU C3	1379.00	20	6314Z	3732.00	5
6306LLU C3	634.00	32	6309N	1244.00	20	6314ZZ	3948.00	5
6306LU	595.00	32	6309NR	1400.00	11	6314ZZ C3	3948.00	5
6306N	569.00	32	6309Z	1352.00	20	6315	4827.00	4
6306NR	630.00	42	6309Z C3	1352.00	20	6315 C3	4827.00	4
6306T2XLLBRA	634.00	32	6309ZZ	1381.00	20	6315LLBR P6 C3	5619.00	4
6306Z	564.00	32	6309ZZ C3	1381.00	20	6315RSS	5364.00	4
6306Z C3	564.00	32	6310	1271.00	10	6315Z	5163.00	4
6306ZZ	592.00	32	6310 C3	1271.00	10	6315Z C3	5163.00	4
6306ZZ C3	592.00	32	6310LLU	1604.00	10	6316	5849.00	4
6307	583.00	26	6310LLU C3	1604.00	10	6316 C3	5849.00	4
6307 C3	583.00	26	6310LU	1501.00	10	6316LLBR C3	6828.00	4
6307LLU	681.00	26	6310N	1266.00	10	6316LLU C3	6828.00	4
6307LLU C3	681.00	26	6310N C3	1266.00	10	6316RSS	6828.00	4
SP6307LLU	921.00	22	6310NR	1426.00	12	6316ZZ	6555.00	4
CR-6307LLU	953.00	18	6310Z	1430.00	10	6316ZZ C3	6555.00	4
CR-6307LLU C3	953.00	18	6310Z C3	1430.00	10	6316ZZ P6 C3	6869.00	4
ASTBCR-6307LLU C3	953.00	18	6310ZN	1470.00	10	6317	6751.00	3
6307LLUN	709.00	26	6310ZNR	1580.00	16	6317 C3	6751.00	3
6307LLUN C3	709.00	26	6310ZZ	1503.00	10	6317 C4	7088.00	3
6307LU	623.00	26	6310ZZ C3	1503.00	10	6317LLBR C3	8483.00	3
6307N	630.00	26	MLT52-6310MLLH1 C3	1988.00	10	6317RSS	8103.00	3
6307NR	687.00	18	6311	1924.00	8	6317ZZ	7733.00	3
6307Z	637.00	26	6311 C3	1924.00	8	6317ZZ C3	7733.00	3
6307Z C3	637.00	26	6311LLU	2375.00	8	6317ZZ P6 C3	8099.00	3
6307ZN	664.00	26	6311LLU C3	2375.00	8	6318	8729.00	3





BEARING NO.	MRP In Rs.	CASE Qty.	BEARING NO.	MRP In Rs.	CASE Qty.	BEARING NO.	MRP In Rs.	CASE Qty.
6318 C3	8729.00	3	6413	5668.00	12	7206B	1387.00	44
6318LLBR C3	9688.00	3	6414	7512.00	3	7207B	1743.00	32
6318RSS	9688.00	3	6415	9125.00	4	7208B	2152.00	30
6318ZZ	9291.00	3	6415 C3	9125.00	4	7209B	2386.00	24
6318ZZ C3	9291.00	3	6416	12554.00	2	7210B	2558.00	24
6318ZZ P6 C3	9483.00	3	6801ZZ	169.00	120	7211B	3022.00	26
6319	10583.00	2	6802ZZ	237.00	120	7212B	3798.00	12
6319 C3	10583.00	2	6802ZZ C3	237.00	120	7213B	4579.00	12
6319ZZ	11787.00	2	6804ZZ	374.00	324	7214B	5175.00	6
6319ZZ C3	11787.00	2	6805ZZ	409.00	180	7215B	5945.00	8
6319ZZ P6 C3	12110.00	2	6817	3218.00	20	7218B	9382.00	5
6320	12876.00	2	6818ZZ C3	3751.00	20	7220BM	13612.00	4
6320 C3	12876.00	2	6901	224.00	480	7222BM	36890.00	4
6320RSS	14143.00	2	6901RS	319.00	240	7224BM	37260.00	4
6320ZZ	13563.00	2	6901RSS	345.00	480	7226BM	38707.00	4
6321	16492.00	1	6901ZZ	283.00	240	7228BM	42782.00	1
6321 C3	16492.00	1	6902	256.00	315	7230BM	46856.00	1
6322	18126.00	2	6902 C3	256.00	315	72X28X18	769.00	60
6322 C3	18126.00	2	6902RS	379.00	315	7304B	1089.00	100
6322M	29696.00	2	6902Z	297.00	315	7305B	1498.00	44
6322ZZ	20914.00	2	6902ZZ	299.00	315	7306B	1899.00	32
6324	25079.00	2	6903T2X	285.00	315	7307B	2266.00	26
6324 C3	25079.00	2	6903ZZ	333.00	315	7308B	2628.00	18
6324M	37085.00	2	6904	288.00	216	7309B	3264.00	18
6324M C3	37085.00	2	6904 C3	288.00	216	7310B	3532.00	10
6326	32254.00	1	6904ZZ	367.00	216	7311B	4564.00	8
6326 C3	32254.00	2	6905	301.00	180	7312B	7086.00	6
6326M	42658.00	1	6905 C3	301.00	180	7312BCB	7086.00	6
6326M C3	42658.00	1	6905ZZ	369.00	180	7312BG	7086.00	6
6328 C3	35112.00	1	6905ZZ C3	369.00	180	7312BGA	7086.00	6
6328M C3	48506.00	1	6906	418.00	128	7313B	7828.00	6
6330 C3	97722.00	1	6906RSS	490.00	128	7314B	9756.00	4
6330M C3	110492.00	1	6906ZZ	478.00	128	7315B	11072.00	4
6332 C3	104340.00	1	6907ZZ	586.00	63	7316B	12566.00	4
6332M C3	139504.00	1	6908	854.00	63	7317B	15144.00	3
6403	801.00	44	6908ZZ	902.00	63	7318B	20873.00	3
6403RSS	827.00	44	6909	860.00	63	7319BM	23463.00	2
6404	996.00	36	6909LLUA	999.00	63	7320BM	29084.00	2
6405	1310.00	26	6909LLUA C3	999.00	44	7322BM	44008.00	1
6405RS	1365.00	26	6910	1280.00	36	7324BCBM	55904.00	1
6406	1019.00	22	6911	1387.00	30	7326BM	67385.00	1
6406N	1071.00	22	6911ZZ	1538.00	30	7328BM	82160.00	1
6406NR	1208.00	20	6911ZZ C3	1538.00	30	7330BM	90988.00	1
6407	1806.00	18	6912	1501.00	32	98204	296.00	180
6407 C3	1806.00	18	6912ZZ	1780.00	32	98205	270.00	144
6408	1840.00	10	6913	1649.00	36	ASTBG-1361LLUA	477.00	100
6408N	2073.00	10	6913ZZ	1945.00	36	ASTBN-1569XA	1293.00	4
6409	2182.00	8	6914	1755.00	35	BB1019	1239.00	12
6409 C3	2182.00	8	6914ZZ	2105.00	35	BB1063	593.00	44
6410	2874.00	6	6915ZZ	2685.00	16	BB1072	4240.00	2
6411	4020.00	6	7202B	838.00	180	BB1079	2397.00	48
6411 C3	4020.00	6	7203B	932.00	180	BB1103	455.00	32
6412	5194.00	4	7204B	979.00	128	CR-805345 (356437)		
6412 C3	5194.00	4	7205B	1292.00	100	(TC FAN Support)	1255.00	4

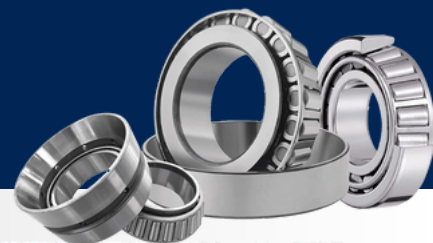




BEARING NO.	MRP in Rs.	CASE Qty.	BEARING NO.	MRP in Rs.	CASE Qty.	BEARING NO.	MRP in Rs.	CASE Qty.
CR-805345 WH			TS2-20X56X17N CS30	379.00	150	51317M	8288.00	3
(TC FAN Support Assembly)4843.00	2		TS2-N1530	418.00	4	51318	9370.00	3
JPU51-15	2150.00	59	S7	350.00	324	51318M	9370.00	3
JPU52-128+JF434	2167.00	12	S8	450.00	180	51320	12530.00	2
LS5	495.00	324	S10	504.00	144	51322	14324.00	2
LS7	504.00	180	BALL THRUST BEARINGS			51409	2511.00	8
LS8	464.00	128	51101	204.00	315	51410	5202.00	8
LS8Z	541.00	128	51102	222.00	315	51414	8109.00	3
LS9	646.00	100	51103	226.00	315	CLUTCH RELEASE BEARINGS		
LS10	941.00	64	51104	229.00	180	CR-10 MB	1079.00	8
LS11	683.00	44	51105	300.00	180	CR-1002 C3	1502.00	18
LS11K	692.00	44	51106	318.00	128	CR-1002LLUA C3	1652.00	18
LS11N C3	692.00	44	51107	350.00	112	CR-1035	1007.00	15
LS12	1024.00	44	51108	439.00	63	CR-1035 CBH	1387.00	4
LS12-1/2	1539.00	42	51109	507.00	44	CR-12MM	511.00	48
LS12K	1157.00	44	51110	657.00	36	CR-12MMH	804.00	12
LS13	1035.00	26	51111	913.00	30	CR-14 ACB	752.00	18
LS13-1/2	1596.00	24	51112	993.00	24	CR-1888180	1196.00	15
LS14	1242.00	20	51114	1320.00	27	CR-1888180 WH	1387.00	4
LS14-1/2	1256.00	26	51118	1718.00	12	CR-1888180LLU	1243.00	18
LS15	1485.00	26	51120	1930.00	6	CR-1888451	1021.00	15
MS7	579.00	112	51122	2109.00	5	CR-1888451 WH	1313.00	32
MS8	643.00	100	51124	2526.00	4	CR-21 SC	752.00	27
MS9	1160.00	64	51126	3445.00	4	CR-2143 SC	712.00	27
MS10	1216.00	44	51200	293.00	270	CR-2145 MM	671.00	32
MS11	1255.00	32	51202	327.00	270	CR-27	992.00	12
MS12	1134.00	22	51203	339.00	180	CR-27 WH	1371.00	4
MS12-1/2	1838.00	22	51205	451.00	112	CR-306445C	1075.00	26
MS12K	1191.00	22	51206	519.00	100	306445CLLU C3	1102.00	26
MS13	1665.00	20	51207	542.00	44	CR-34 SC	700.00	16
MS13-1/2	2902.00	18	51208	868.00	32	CR-3527	1079.00	12
MS14	1749.00	11	51209	967.00	30	CR-41	511.00	32
MS14-1/2	1735.00	11	51210	1203.00	22	CR-41 WH	839.00	24
MS15	2009.00	12	51212	1684.00	21	CR-4323 SC	1130.00	24
MSN14	2719.00	8	51213	1896.00	20	CR-44 SAN	678.00	24
MSN14 C3	2719.00	8	51214	2269.00	10	CR-44 SC	656.00	24
MLB-N1392	770.00	10	51215	2507.00	10	CR-4546 SC	2470.00	4
MLB-N1412T2XLLU	1429.00	10	51216	2596.00	12	CR-4556 SC	2408.00	2
MLB-N1412T2XLLU C3	1429.00	10	51217	2814.00	6	CR-4569 SC	2304.00	2
MLN1201	524.00	10	51218	4690.00	6	CR-4576 SC	2333.00	2
MLN1332LH1A	524.00	10	51220	6051.00	4	CR-48 SC	745.00	16
MLN1360 C3	405.00	10	51222	6999.00	4	CR-55 TM	1640.00	8
MLN1424Z	833.00	10	51228	9314.00	2	CR-55 TPH	1932.00	4
MLN1424Z CS23 C3	833.00	10	51306	661.00	33	CR-5592	1808.00	8
MLN1426N	386.00	10	51307	821.00	36	CR-60 TM	3501.00	2
MLN1426N C3	386.00	10	51308	1180.00	18	CR-6544	1925.00	8
MLN1506	572.00	10	51309	1288.00	18	CR-6575 SC	3179.00	2
N1272RSS	364.00	6	51310	1711.00	12	CR-6647-47	2772.00	4
N1366	443.00	12	51311	2167.00	8	CR-6657	2363.00	2
N1422	418.00	12	51312	2354.00	8	CR-6667 SC	2378.00	2
RLS10	632.00	64	51313	2708.00	7	CR-6695 SC	2333.00	4
RLS20	3990.00	6	51314	3201.00	5	CR-6698 SC	2408.00	4
RLS32	11370.00	1	51315	6502.00	4	CR-71 MC	1043.00	24
SP72X25X17	719.00	60	51316	6637.00	4	CR-71PMC	1043.00	24

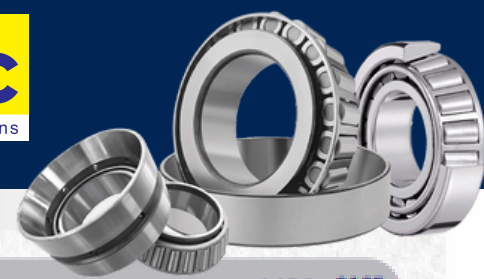


BEARING NO.	MRP In Rs.	CASE Qty.	BEARING NO.	MRP In Rs.	CASE Qty.	BEARING NO.	MRP In Rs.	CASE Qty.
CR-75 WH LONG HUB	2554.00	1	623ZZ	137.00	120	UCF211	2969.00	2
CR-7544	1970.00	4	624RSS	119.00	120	UCF211-32	2969.00	2
CR-7896 SC	4376.00	4	624ZZ	109.00	120	UCF212	3699.00	2
CR-CT1310	1094.00	18	625RSS	124.00	120	UCF213	4855.00	2
CR-D12	861.00	32	625ZZ	114.00	120	UCF213-40	4855.00	2
CR-GB75 WH	2333.00	2	626RSS	127.00	120	UCF215	5985.00	2
CR-ME 2710	1412.00	8	626ZZ	119.00	120	UCFL204	612.00	30
FCR50	1375.00	12	627RSS	131.00	120	UCFL205	764.00	24
FCR54	1307.00	10	627ZZ	124.00	120	UCFL205-16	764.00	24
FCR58	1545.00	10	628RSS	127.00	360	UCFL206	1036.00	16
CENTER JOINT BEARINGS			628ZZ	106.00	120	UCFL207	1338.00	12
6013LLU WOS	2167.00	4	629RSS	142.00	120	UCFL207-20	1338.00	12
6013LLU WOS C3	2167.00	4	629ZZ	131.00	120	UCFL208	1676.00	8
6211 WOS	1789.00	4	629ZZ C3	131.00	120	UCFL208-24	1676.00	8
6211 WOS C3	1789.00	4	686ZZ	131.00	120	UCFL209	1884.00	8
6211LLU WOS	1972.00	4	688RSS	140.00	120	UCFL210	2185.00	6
88509 WOS	1594.00	3	688ZZ	136.00	120	UCFL211	3052.00	5
WHEEL HUB BEARINGS			694RSS	140.00	120	UCFL211-32	3052.00	5
AU1101-2LLX2	1132.00	24	694ZZ	136.00	120	UCFL212	3634.00	3
AU1102-2LLX2	1203.00	43	695ZZ	142.00	120	UCP204	603.00	30
AU1103M-2LLX2	978.00	24	696ZZ	145.00	120	UCP204-12	603.00	30
AU1105-2LLX2	1296.00	32	698RSS	149.00	120	UCP205	734.00	24
AU1107-2LLX2	1009.00	24	698ZZ	142.00	120	UCP205-16	734.00	24
AU1109-2LL	1090.00	48	UNIT BEARING			UCP206	1040.00	16
AU1111-2LX2LX	1425.00	24	UC204	350.00	36	UCP207	1244.00	12
AU1112-2LLX	1800.00	24	UC204-12	350.00	36	UCP207-20	1244.00	12
AU1113-2LLX	1817.00	24	UC205	399.00	36	UCP208	1559.00	8
AU1114-2LLX	2113.00	12	UC205-16	399.00	36	UCP208-24	1559.00	8
AU1116-2LL	1244.00	21	UC206	505.00	21	UCP209	1692.00	8
AU1117-2LLX2	1275.00	24	UC206-18	505.00	21	UCP209-28	1692.00	8
AU1118-2LLX2	1237.00	24	UC206-20	505.00	21	UCP210	2179.00	6
AU1120-2LL	1528.00	24	UC207	728.00	24	UCP211	2566.00	6
AU1121-2LL	1458.00	24	UC207-20	728.00	24	UCP211-32	2566.00	6
AU1122-2LL	1646.00	12	UC208	932.00	12	UCP212	3400.00	4
AU1123-2LL	3862.00	4	UC208-24	932.00	12	UCP212-36	3400.00	4
AU1124-2LL	1492.00	24	UC209	1070.00	10	UCP213	4160.00	3
N1271 (GEN-3 NON ABS)	5318.00	4	UC209-28	1070.00	10	UCP213-40	4160.00	3
DU295337-ZZ	2499.00	48	UC210	1148.00	10	UCP214	5868.00	3
N1495XAT2XLLX	32530.00	1	UC211	1525.00	8	UCP215	6161.00	3
N1501XAT2XLLX	2646.00	12	UC211-32	1525.00	8	UCP215-48	6161.00	3
N1293XAT2XLLX	2646.00	10	UC212	1848.00	4	UCP216	9117.00	1
N1504XA/JL69310	839.00	44	UC213	2372.00	4	UCT206	1206.00	12
N1612XAT2XLLX	18480.00	2	UC213-40	2372.00	4	UCT207	1593.00	8
N1615XAT2XLLX	13890.00	2	UC215	3975.00	2	UCT207-20	1593.00	8
TS2-N1331XAT2XLLX	2588.00	12	UCF205	733.00	15	UCT208	1958.00	4
TU1204	2484.00	12	UCF205-16	733.00	15	UCT208-24	1958.00	4
MINIATURE BEARINGS			UCF206	1040.00	8	UCT209	2355.00	4
607RSS	114.00	120	UCF207	1244.00	6	UCT209-28	2355.00	4
607ZZ	95.00	120	UCF207-20	1244.00	6	UCT210	2469.00	4
608-2RS TN9	121.00	120	UCF208	1627.00	4	UCT211	3673.00	3
608RSS	121.00	120	UCF208-24	1627.00	4	UCT211-32	3673.00	3
608ZZ	97.00	120	UCF209	1828.00	3	UCT212	6169.00	2
608ZZ C3	97.00	120	UCF209-28	1828.00	3	UCX20	19791.00	1
609ZZ	129.00	120	UCF210	2119.00	3			



BEARING NO.	MRP in Rs.	CASE Qty.	BEARING NO.	MRP in Rs.	CASE Qty.	BEARING NO.	MRP in Rs.	CASE Qty.
UNIT BEARINGS R3 SEAL			UCT211-32 R3	3856.00	3	30218	4264.00	4
UC204 R3	385.00	36	COMMERCIAL VEHICLE TWIN PACK TAPER			30219	4527.00	4
UC205 R3	437.00	36	ROLLER BEARINGS			30220	6251.00	4
UC205-16 R3	437.00	36	30204 BEARINGS SET	816.00	48	30221F	7831.00	3
UC206 R3	557.00	21	320/32X BEARINGS SET	1102.00	48	30222	8659.00	2
UC207 R3	799.00	24	320/32X+30204 BEARINGS SET	960.00	24	30224	11919.00	2
UC208 R3	1029.00	12	CVSET32214 (32214)	3976.00	4	30226	16387.00	2
UC208-24 R3	1021.00	12	CVSET32217 (32217)	6856.00	4	30228	19835.00	1
UC209 R3	1178.00	10	CVSET32308 (32308)	2152.00	12	30230	19980.00	1
UC210 R3	1261.00	10	CVSET513640 (JHM513640/ JHM513615)	4824.00	6	30302	517.00	150
UC211 R3	1676.00	8	CVSET535532 (535/532A)	3228.00	8	30303	527.00	112
UC211-32 R3	1676.00	8	CVSET539532 (539/532X)	3100.00	8	30304	530.00	100
UC212 R3	2029.00	4	CVSET566563 (566/563)	3640.00	6	30305	600.00	44
UC213 R3	2607.00	4	CVSET580572 (580/572)	3354.00	4	30306	757.00	30
UCF205 R3	771.00	15	CVSET637920 (6379/6320)	5872.00	4	30307	1276.00	27
UCF206 R3	1091.00	8	CVSET683672 (683/672)	6138.00	4	30308	1148.00	18
UCF207 R3	1304.00	6	TAPER ROLLER BEARINGS			30309	1658.00	18
UCF207-20 R3	1311.00	6	1395/5335	3269.00	10	30310	2061.00	8
UCF208 R3	1712.00	4	151005/15250X	779.00	33	30311	2745.00	8
UCF208-24 R3	1712.00	4	15123/15245	714.00	33	30312	3402.00	6
UCF209 R3	1916.00	3	16150XA/16282	878.00	30	30313	3975.00	4
UCF210 R3	2233.00	3	1988/1922	568.00	70	30314	4076.00	4
UCF211 R3	3113.00	2	25572/25520	984.00	23	30315	4885.00	4
UCFL204 R3	644.00	30	25590/25520	1254.00	23	30316	5568.00	3
UCFL205 R3	804.00	24	25590/25523	1276.00	23	30317	9088.00	3
UCFL206 R3	1089.00	16	2580/2520	1238.00	36	30318	12005.00	2
UCFL207 R3	1406.00	12	25877X/25821	937.00	30	30319	14116.00	2
UCFL208 R3	1763.00	8	2789/2729	995.00	45	30322	24069.00	1
UCFL211 R3	3206.00	5	TMB2789/TMB2729	1086.00	45	30324	30545.00	1
UCP204 R3	636.00	30	28580/28521	1254.00	18	31305	864.00	44
UCP205 R3	771.00	24	28584/28521	1553.00	18	31306	995.00	30
UCP205-16 R3	773.00	24	28985/28921	1571.00	20	31307	1297.00	22
UCP206 R3	1092.00	16	29685/29620	2168.00	12	31308	1559.00	18
UCP207 R3	1305.00	12	TMB29685/TMB29620	2252.00	12	31309	1732.00	18
UCP207-20 R3	1305.00	12	30202	438.00	180	31309X1	1732.00	18
UCP208 R3	1631.00	8	30203	448.00	150	31310	2163.00	8
UCP208-24 R3	1631.00	8	30204	434.00	112	31311	2662.00	8
UCP209 R3	1785.00	8	30205	468.00	92	31313	3817.00	4
UCP210 R3	2283.00	6	30206	664.00	44	31314	5304.00	4
UCP211 R3	2693.00	6	30207	667.00	32	31315	6448.00	4
UCP211-32 R3	2693.00	6	30208	913.00	26	31316	9147.00	3
UCP212 R3	3574.00	4	30209	742.00	18	31317	10124.00	3
UCP213 R3	4381.00	3	30210	1069.00	22	31318	11058.00	2
UCP213-40 R3	4381.00	3	30211	1578.00	20	31319	15717.00	2
UCP214 R3	6177.00	3	30212X1	1749.00	10	31320	21429.00	2
UCP215 R3	6475.00	3	30213	2125.00	8	31322	27833.00	1
UCP215-48 R3	6475.00	3	30213X	2125.00	8	31324	34626.00	1
UCT206 R3	1265.00	12	30214	1993.00	6	31328	94137.00	1
UCT207 R3	1670.00	8	30214X1	1993.00	6	31885/3120	1265.00	27
UCT208 R3	2063.00	4	30215	2213.00	6	320/32X	586.00	70
UCT208-24 R3	2063.00	4	30216M	2832.00	6	32004X	603.00	150
UCT209 R3	2466.00	4	30217	4052.00	5	TMB32004X	661.00	100
UCT210 R3	2587.00	4	30217X	4052.00	5	32005	624.00	112
UCT211 R3	3856.00	3				32005X	593.00	112

Tapered Roller Bearing



BEARING NO.	MRP In Rs.	CASE Qty.	BEARING NO.	MRP In Rs.	CASE Qty.	BEARING NO.	MRP In Rs.	CASE Qty.
32005X1N	664.00	112	32219	5709.00	3	33209	1945.00	16
ML32005X1XAT2X	697.00	112	32220	7504.00	3	33210	2152.00	15
32006X	652.00	70	32221	11821.00	2	33211	2358.00	8
32007X	685.00	44	32222	12467.00	2	33213	2992.00	6
32008X	913.00	48	32224	16183.00	1	33214	3579.00	6
32009X	938.00	45	32226	23958.00	1	33215	3637.00	5
32010X	1118.00	26	32228	31223.00	1	33215M	3637.00	5
32011X	1232.00	22	32230	41000.00	1	33216	5781.00	4
32012X	1546.00	20	32232	46986.00	1	33217	8117.00	3
32013X	1770.00	22	32236	50289.00	1	34306/34478	3037.00	6
32014X	1862.00	10	32240	108322.00	1	344A/332	1033.00	45
32014X P6X	1862.00	10	32303	857.00	72	3490/3420	1293.00	18
32015X	2361.00	10	32304	894.00	72	3585M/3525	1648.00	16
32016X	2864.00	8	32305	895.00	42	3659 CAGE ASSY	696.00	45
32017X	3403.00	6	32306	1075.00	27	368A/362A	1920.00	22
32017X P6X	3403.00	6	32307	1318.00	18	369S/362A	1557.00	22
32018X	3500.00	6	32308	1207.00	12	TMB37425/TMB37625	2396.00	7
32019	3565.00	6	32309	1678.00	8	37431A/37625	4859.00	7
32019X	3565.00	6	32310	2443.00	8	3780/3720	1736.00	12
32020X	3310.00	4	32311	3161.00	6	3782/3720	2100.00	15
32021	5810.00	4	32312	3846.00	4	387/382	1436.00	20
32022XF	7753.00	4	32313	4566.00	4	39580/39520	2460.00	8
32024	8445.00	3	32314	6457.00	3	39581/39520	2756.00	8
32026	11049.00	2	32315	7032.00	3	39585/39520	2751.00	8
32028XF	25430.00	2	32316	8917.00	2	395S/394A	1648.00	12
32030	25606.00	2	32317	12061.00	2	3982/3920	2187.00	8
32032	18650.00	1	32318	16795.00	2	3982N/3920	2300.00	8
32034	24130.00	1	32319	18009.00	1	3982X/3927XA	2120.00	8
32034X	24130.00	1	32320	22025.00	1	3984M/3920	1977.00	8
32036	47620.00	1	32322	38420.00	1	3984MANXA/3920F	2288.00	8
32038X	56600.00	1	32324	41014.00	1	399A/394A	1522.00	12
32044	100270.00	1	32326	49607.00	1	418/414	1260.00	18
32048	113350.00	1	32334	209253.00	1	42687/42620	2388.00	10
32056X	178740.00	1	32952	91548.00	1	42687/42620F	2388.00	10
32064	228870.00	1	33005	644.00	112	42690XA/42620F	2487.00	6
32204	592.00	72	TMB33005	645.00	112	462A/453X	1788.00	10
32205	691.00	72	33010	1600.00	22	47487/47420	1992.00	8
32206	825.00	33	33012	1835.00	21	47490/47420	3375.00	8
32207	881.00	30	33013	2023.00	18	47890/47820	4402.00	5
32207B	881.00	30	33019	3235.00	5	482/472	2050.00	8
32208	972.00	18	33020	4912.00	4	497/492A	3279.00	6
32209	1031.00	23	33022	5583.00	3	497/493	4166.00	6
32210	1203.00	18	33024	9049.00	3	50KW/3720	1871.00	12
32211	917.00	18	330632C	3110.00	6	51575U/52883U		
32212	1756.00	8	33111	1530.00	12	{14131/14276}	957.00	32
X32212	1756.00	8	33112	2324.00	10	52799U/52800U		
TMB32212	1775.00	8	33113	2515.00	8	{25877/25821}	902.00	30
32213	2247.00	8	33115	2658.00	6	52878U/52879U		
32214	2238.00	4	33116	3777.00	6	{02872/02820}	1004.00	30
32215	2925.00	6	33118	4913.00	3	52880/917773		
M32216A/M32216E	2770.00	4	33205	1098.00	72	{24780/24720}	909.00	45
32216	2770.00	4	33206	1142.00	42	52940U/52941U		
32217	3896.00	4	33207	1540.00	27	{11590/11520}	489.00	150
32218	4917.00	4	33208	1437.00	18			



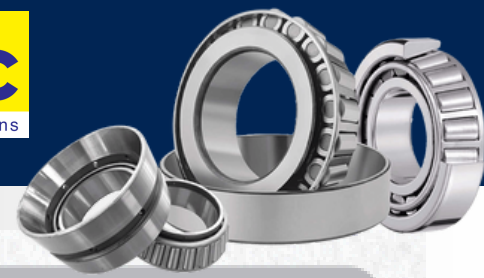
BEARING NO.	MRP in Rs.	CASE Qty.	BEARING NO.	MRP in Rs.	CASE Qty.	BEARING NO.	MRP in Rs.	CASE Qty.
52979U/52980U			LM11749/LM11710	480.00	150	N212E	2210.00	12
(25577/25523)	1087.00	23	LM11949/LM11910	635.00	112	N213E	2591.00	12
535/532A	1815.00	8	LM29749/LM29710	831.00	44	N214E	3088.00	10
539/532X	1809.00	8	LM29749/LM29711	871.00	48	N215E	3180.00	8
5395/5335	2900.00	8	LM300849X/LM300811	948.00	48	N216E	4306.00	16
55200C/55437	3848.00	8	LM44649/LM44610	525.00	100	N218E	5280.00	5
55206C/55437	3732.00	8	LM48548/LM48510	562.00	48	N220E	7200.00	4
5555/552A	2723.00	7	LM501349/LM501310	755.00	30	N222E	9590.00	3
559/552A	3885.00	7	LM501349/LM501314	1098.00	45	N224E	12494.00	2
560/552A	3640.00	7	LM603049/LM603011	974.00	45	N226	17585.00	1
565/563	2896.00	6	LM603049/LM603012	1007.00	45	N234M	39187.00	1
566/563	2045.00	6	LM603049X/LM603011	1023.00	45	N234M C3	39187.00	1
567/563	2318.00	6	LM67048/LM67010	493.00	39	N305	555.00	44
580/572	1940.00	4	LM806649/LM806610	1730.00	24	N306E	606.00	60
T580/572	2328.00	4	M12644/M12611	752.00	92	N307	1110.00	26
594A/592A	3403.00	5	M12649/M12610	753.00	92	N308E	1279.00	22
623/612	2265.00	1	M802048/M802011	1589.00	23	N309	1831.00	20
6379/6320	3399.00	4	M84548/M84510	762.00	70	N310	2212.00	10
ASTB-6379X1XA/6320	3668.00	4	M86649/M86610	1139.00	33	N310 C3	2212.00	10
643/632	7450.00	4	M88048/M88010	1124.00	30	N311E	3397.00	8
683/672	3548.00	4	N1061	961.00	112	N312	3565.00	6
685/672	4263.00	4	N1062	970.00	24	N312 C3	3565.00	6
72212C/72487	2063.00	6	N1090	1762.00	18	N312EM	3771.00	6
759/752	8800.00	6	N1257	6080.00	2	N313E C3	4457.00	6
77213L	3437.00	4	N1408XA	1122.00	18	N313EM	5390.00	6
925446C/925447C			N1449XA	728.00	39	N314 C3	5302.00	5
(LM501349/LM501310)	755.00	30	N1579FXA	5365.00	3	N314E	5302.00	5
AST-9185XA/9121F	8165.00	4	N1649FXA	4890.00	4	N314EM1	7077.00	5
ASTBN1091XA	1600.00	8	N1696XA/52877			N315E	5497.00	4
H715334/H715311	6080.00	4	(807266/52877)	1332.00	18	N315EM	9414.00	4
H715343/H715311	6606.00	4	T2ED045	1691.00	12	N316E	7836.00	4
HM212049/HM212011	2936.00	7	T52-HM807046XA/10TSF	3480.00	21	N316EM	11770.00	4
HM218248/HM218210	4441.00	4	T52-N1126	706.00	44	N317	10070.00	3
HM518445/HM518410	3443.00	4	T52-T2EE040XA	1632.00	18	N317 C3	10070.00	3
HM801346/HM801310	2010.00	16	4TB33889XA/33822F	3210.00	12	N317EM1	11975.00	3
HM803146/HM803110	2016.00	15	U497/460	1846.00	22	N317ETN	9796.00	3
HM803149/HM803110	2158.00	15	U497/U460L	1846.00	22	N318	12438.00	2
HM803149/HM803112	2286.00	15	CYLINDRICAL ROLLER BEARINGS			N318 C3	12438.00	2
HM804846/HM804810	2580.00	12	22X58X17	864.00	64	N318E	12438.00	3
HM88547/HM88510	1331.00	21	30X58X17	902.00	64	N318EM1	15947.00	3
HM88649/HM88610	1629.00	30	CR30	756.00	44	N319	13535.00	2
HM89446/HM89410	1533.00	18	CR50	1056.00	30	N319 C3	13535.00	2
HM89449/HM89410	1467.00	18	LO64	1009.00	44	N319M1	17815.00	2
HM903249/HM903210	1710.00	12	MUB7307	1806.00	22	N320E	15398.00	2
HM911244/HM911216	3599.00	6	N1004	1217.00	22	N320E C3	15398.00	2
JHM513640/JHM513615	2733.00	6	N1076	1999.00	26	N320M	19186.00	2
JLM710949C/JLM710910	1874.00	11	N1076 C3	1999.00	26	N320M C3	19186.00	2
JM511946/JM511910	2232.00	10	N1242	1842.00	22	N321E	22342.00	2
MLJM511946/JM511910	2232.00	10	N1242 C4	1842.00	22	N321M	24412.00	2
JM716646/JM716610	1960.00	6	N1302	1208.00	23	N321M C3	24412.00	2
JM716649/JM716610	3216.00	6	N207E	923.00	32	N322E	23936.00	2
L44649/L44610	450.00	100	N208	965.00	30	N322EM	26440.00	2
L68149/L68111	644.00	39	N209E	1319.00	24	N324E	33121.00	2
LM104949/JLM104910	1226.00	23	N210E	1470.00	24	N324M1	35540.00	2



BEARING NO.	MRP In Rs.	CASE Qty.	BEARING NO.	MRP In Rs.	CASE Qty.	BEARING NO.	MRP In Rs.	CASE Qty.
N326E	40548.00	1	NJ304E	1158.00	100	NU217E	5003.00	6
N326EM	43780.00	1	NJ305	579.00	44	NU217EM1	6588.00	6
N332M C3	63887.00	1	NJ305ET2X	675.00	44	NU218E	6467.00	4
N334E	77960.00	1	NJ306E	1189.00	32	NU218E C3	6467.00	4
N334M	97955.00	1	NJ306E C3	1189.00	32	NU218EM	7738.00	4
N8018FC(JC8018)	2128.00	30	NJ306ET2X	1189.00	32	NU219E	7329.00	3
N8025FC(JC8025)	3846.00	12	NJ307E	1244.00	26	NU220	9926.00	4
NF210E	1457.00	24	NJ308E	1920.00	22	NU220 C3	9926.00	4
NF309	1361.00	20	NJ308E C3	1920.00	22	NU2205	1165.00	92
NF309 C3	1361.00	20	NJ309	1287.00	20	NU2206E	1293.00	44
NH2210	1580.00	18	NJ309 C3	1287.00	20	NU2208	1443.00	22
NJ202ECP	627.00	180	NJ310	1935.00	10	NU2208EM	1443.00	22
NJ203ECP	806.00	150	NJ310 C3	1935.00	10	NU2209E	1561.00	18
NJ204E	678.00	128	NJ311E	2991.00	8	NU2209ENM	1567.00	18
NJ204ECP C3	653.00	128	NJ311E C3	2991.00	8	NU220M1	10599.00	4
NJ205E	592.00	100	NJ313E C3	4453.00	6	NU2210E	2845.00	22
NJ206E	960.00	44	NJ313EM	5870.00	6	NU2215E	6125.00	6
NJ206ECP C3	939.00	44	NJ314E	7192.00	5	NU2215EM1	8028.00	6
NJ206ET2X	932.00	44	NJ318E	11112.00	2	NU2216E	6840.00	12
NJ207E	960.00	32	NJ319E	12966.00	2	NU2216E C3	6840.00	12
NJ208E	1018.00	30	NJ319E C3	12966.00	2	NU2216EM1	7681.00	12
NJ209EM	1102.00	24	NJ320E	14760.00	2	NU2218EM1	10870.00	4
NJ210E	1420.00	24	NJ321M	24371.00	2	NU222	13037.00	1
NJ210E C3	1420.00	24	NJ321M1 C3	24371.00	2	NU2220EM1	14906.00	3
NJ210EM	1488.00	24	NJ322EM	28740.00	1	NU2222EM1	17785.00	2
NJ210EM C3	1488.00	24	NJ324EM	37430.00	1	NU2226EM	27700.00	2
NJ211	1508.00	26	NJ326EM	44222.00	1	NU2226EMA C3	27700.00	1
NJ211 C3	1508.00	26	NJ328EM	60313.00	1	NU2228M C3	38550.00	1
NJ215E	3552.00	8	NJ330EM	75424.00	1	NU222M	15616.00	1
NJ217E	5517.00	6	NJ332EM	96704.00	1	NU222M C3	15616.00	1
NJ218E	5868.00	20	NJ334EM	99920.00	1	NU2232EMA C3	76725.00	1
NJ219E	6620.00	4	NJ336M C3	106068.00	1	NU224	16806.00	1
NJ220	7386.00	4	NJK305	561.00	44	NU224E C3	16806.00	2
NJ2205E	1080.00	92	NN3013KM C3	10630.00	6	NU224M	18930.00	1
NJ2206E	1335.00	44	NN3017KM C3	21400.00	6	NU224M C3	18930.00	1
NJ2206E C3	1335.00	44	NN3024KM C3	22480.00	3	NU226E	18566.00	2
NJ2207E	1560.00	30	NN3026KM	24281.00	2	NU226 C3	18566.00	1
NJ2209E	1871.00	18	NN3026KM C3	24281.00	2	NU226M	22084.00	3
NJ2210	1835.00	22	NU204TN	948.00	128	NU226M C3	22084.00	3
NJ2214E	6096.00	8	NU205ET2X	463.00	100	NU228	20994.00	1
NJ2220	14068.00	8	NU205ET2X C3	463.00	100	NU228 C3	20994.00	1
NJ222E	8380.00	3	NU206E	956.00	44	NU228M	25536.00	1
NJ224E	13321.00	2	NU207	996.00	32	NU228M C3	25536.00	1
NJ224M	17036.00	2	NU207ET2X	996.00	32	NU230 C3	19670.00	1
NJ226E	17730.00	2	NU208E	1014.00	30	NU2305E	1256.00	42
NJ226EM	20000.00	2	NU209E	1024.00	24	NU2307E	2122.00	18
NJ228E	21568.00	2	NU212E	2781.00	12	NU2308E	2358.00	15
NJ2305EM	947.00	33	NU212E C3	2781.00	12	NU230E	19670.00	1
NJ230E	28000.00	1	NU213E	3082.00	12	NU230M	25364.00	1
NJ2311E	5560.00	6	NU214E	3337.00	10	NU230M1 C3	25364.00	1
NJ2320E	17465.00	1	NU215E	4480.00	8	NU2314E	7443.00	3
NJ238EM	60875.00	1	NU215E C3	4480.00	8	NU2314E C3	7443.00	3
NJ244EM	96845.00	1	NU216E	4843.00	6	NU232 C3	51676.00	1
NJ302ECP	1114.00	180	NU216EM1	5545.00	6	NU232E	51676.00	1



BEARING NO.	MRP In Rs.	CASE Qty.	BEARING NO.	MRP In Rs.	CASE Qty.	BEARING NO.	MRP In Rs.	CASE Qty.
NU232E C3	51676.00	1	NU320E	20675.00	2	NUP310N	1914.00	10
NU232M	56184.00	1	NU320M	22848.00	2	NUP313	7914.00	6
NU232M C3	56184.00	1	NU320M C3	22848.00	2	NUP315	8850.00	4
NU234EM	41575.00	1	NU321M	24855.00	2	NUP318EM	16640.00	4
NU234M C3	41575.00	1	NU321M C3	24855.00	2	RNU211	1120.00	26
NU236E	47345.00	1	NU322	28069.00	2	RNU2204E C3	741.00	112
NU236EM	62585.00	1	NU322E C3	28069.00	2	RNU309	1791.00	20
NU236M C3	62585.00	1	NU322M	29325.00	2	SPHERICAL ROLLER BEARINGS		
NU240E C3	67635.00	1	NU322M C3	29325.00	2	21306 CC W33	3784.00	30
NU240EM	98285.00	1	NU324	36335.00	2	21308 CC C3 W33	4091.00	22
NU244M	116057.00	1	NU324 C3	36335.00	2	21308 CC W33	4091.00	22
NU244M C3	116057.00	1	NU324M	40356.00	2	21308K CC C3 W33	4091.00	22
NU252EM	220710.00	1	NU324M C3	40356.00	2	21308K CC W33	4091.00	22
NU252EM1 C3	220710.00	1	NU326	38149.00	2	21310 CC C3 W33	4954.00	10
NU305	455.00	44	NU326 C3	38149.00	2	21310 CC W33	4954.00	10
NU305ET2X	493.00	44	NU326M	42439.00	2	21310K CC C3 W33	4954.00	6
NU306E	1188.00	32	NU326M C3	42439.00	2	21311 CC C3 W33	5953.00	8
NU307E	1425.00	22	NU328 C3	47880.00	1	21311 CC W33	5953.00	8
NU307ET2X	1425.00	22	NU328E	47880.00	1	21311 MB C3 W33	6523.00	8
NU307ENS5M	1480.00	22	NU328M1	52585.00	1	21311K CC C3 W33	5953.00	8
NU308	1682.00	22	NU330M	55140.00	1	21311K MB C3 W33	6523.00	8
NU308E C3	1682.00	22	NU330M1 C3	55140.00	1	21312 CC C3 W33	7557.00	6
NU309	1385.00	20	NU332EM C3	65898.00	1	21312 MB C3 W33	8077.00	6
NU309E C3	1385.00	60	NU332M	65898.00	1	21312K MB C3 W33	8077.00	6
NU309EN	1551.00	20	NU336M	122234.00	1	21314 CC C3 W33	8880.00	4
NU309N	1305.00	20	NU336M C3	122234.00	1	21314 MB C3 W33	9196.00	4
NU310	1950.00	10	NU338E C3	132420.00	1	21314K MB C3 W33	9196.00	4
NU310 C3	1950.00	10	NU338EMA C3	142606.00	1	21315 CC W33	11522.00	4
NU311 C3	4284.00	8	NU338M	132420.00	1	21315 MB C3 W33	12206.00	4
NU311E	4284.00	8	NU340M C3	190277.00	1	21315K MB C3 W33	12206.00	4
NU312E	4402.00	6	NU413M1	8050.00	4	21316 CC C3 W33	12106.00	3
NU313E	5974.00	6	NU414M1	12636.00	3	21316 CC W33	12106.00	3
NU313E C3	5974.00	6	NUP1006	1187.00	112	21316 MB C3 W33	12710.00	3
NU314E	6430.00	5	NUP205E	906.00	100	21317 CC C3 W33	14600.00	3
NU314E C3	6430.00	5	NUP207E	1155.00	32	21317 CC W33	14600.00	2
NU314EM1 C4	12348.00	5	NUP208ET2X	1186.00	30	21317K CC C3 W33	14600.00	2
NU315E	8940.00	4	NUP209E	1274.00	24	22205 CC C3 W33	3183.00	92
NU315E C3	8940.00	4	NUP210E	1717.00	24	22205K CC C3 W33	3183.00	95
NU316	10739.00	3	NUP210E C3	1717.00	24	22205K CC W33	3183.00	95
NU316 C3	10739.00	3	NUP210EM	1915.00	24	22206 CC C3 W33	3498.00	42
NU316EF	10739.00	3	NUP210EN	1769.00	24	22206 CC W33	3498.00	42
NU316EM1	15112.00	4	NUP212E	1852.00	12	22206K CC C3 W33	3498.00	42
NU317E	12054.00	3	NUP2206ET2X	1625.00	92	22206K CC W33	3498.00	42
NU317E C3	12054.00	3	NUP2206E	1817.00	44	22207 CC C3 W33	3626.00	30
NU317EM1 C3	16017.00	3	NUP2209E	2160.00	18	22207 CC W33	3626.00	30
NU318E	13978.00	3	NUP2218E	11973.00	8	22207 MB C3 W33	4058.00	30
NU318E C3	13978.00	3	NUP2317	9042.00	8	22207K CC C3 W33	3626.00	30
NU318EM C3	20179.00	3	NUP306EN	1260.00	32	22207K MB C3 W33	4058.00	30
NU318EM1	20179.00	3	NUP308EN	1634.00	22	22208 CC C3 W33	3753.00	28
NU319	14425.00	2	NUP309E	1731.00	20	22208 CC W33	3753.00	28
NU319E C3	14425.00	2	NUP309EM	1752.00	20	22208 MB C3 W33	4159.00	28
NU319EM	20350.00	2	NUP309EN	1787.00	20	22208 MB W33	4159.00	28
NU319EM C3	20350.00	2	NUP309N	1403.00	20	22208K CC C3 W33	3753.00	28
NU320 C3	20675.00	2	NUP310	1888.00	10	22208K MB C3 W33	4159.00	28

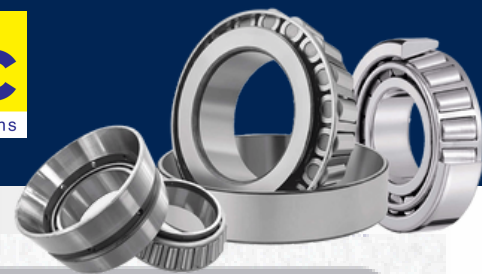


BEARING NO.	MRP in Rs.	CASE Qty.	BEARING NO.	MRP in Rs.	CASE Qty.	BEARING NO.	MRP in Rs.	CASE Qty.
22208K MB W33	4159.00	28	22215K MB W33	7073.00	6	22226 CC C3 W33	24451.00	1
22209 CC C3 W33	3977.00	28	22216 CC C3 W33	6797.00	6	22226 CC W33	24451.00	1
22209 CC W33	3977.00	28	22216 CC W33	6797.00	6	22226 MB C3 W33	25300.00	1
22209 MB C3 W33	4591.00	28	22216 MB C3 W33	7589.00	6	22226 MB W33	25300.00	1
22209 MB W33	4591.00	28	22216 MB W33	7589.00	6	22226K CC W33	24451.00	1
22209K CC C3 W33	3977.00	28	22216K CC C3 W33	6797.00	6	22226K MB C3 W33	25300.00	1
22209K MB C3 W33	4591.00	28	22216K CC W33	6797.00	6	22226K MB W33	25300.00	1
22209K MB W33	4591.00	28	22216K MB C3 W33	7589.00	6	22228 CC C3 W33	29393.00	1
22210 CC C3 W33	4117.00	24	22216K MB W33	7589.00	6	22228 CC W33	29393.00	1
22210 MB C3 W33	4699.00	24	22217 CC C3 W33	7789.00	4	22228 MB C3 W33	31080.00	1
22210 MB W33	4699.00	24	22217 CC W33	7789.00	4	22228 MB C4 W33	39751.00	1
22210K CC C3 W33	4117.00	24	22217 MB C3 W33	9697.00	4	22228 MB W33	31080.00	1
22210K CC W33	4117.00	24	22217 MB W33	9697.00	4	22228K CC W33	29393.00	1
22210K MB C3 W33	4699.00	24	22217K CC C3 W33	7789.00	4	22228K MB C3 W33	31080.00	1
22210K MB W33	4699.00	24	22217K CC W33	7789.00	4	22228K MB W33	31080.00	1
22211 CC C3 W33	4259.00	18	22217K MB C3 W33	9697.00	4	22230 MB C3 W33	37950.00	1
22211 CC W33	4259.00	18	22217K MB W33	9697.00	4	22230 MB W33	37950.00	1
22211 MB C3 W33	4994.00	18	22218 CC C3 W33	9894.00	4	22230K MB C3 W33	37950.00	1
22211 MB W33	4994.00	18	22218 CC W33	9894.00	4	22230K MB W33	37950.00	1
22211K CC C3 W33	4259.00	18	22218 MB C3 W33	10772.00	4	22232 CC C3 W33	45815.00	1
22211K CC W33	4259.00	18	22218 MB W33	10772.00	4	22232 MB C3 W33	48740.00	1
22211K MB C3 W33	4994.00	18	22218K CC C3 W33	9894.00	4	22232 MB W33	48740.00	1
22211K MB W33	4994.00	18	22218K CC W33	9894.00	4	22232K MB C3 W33	48740.00	1
22212 CC C3 W33	5112.00	10	22218K MB C3 W33	10772.00	4	22232K MB W33	48740.00	1
22212 CC W33	5112.00	10	22218K MB W33	10772.00	4	22234 CC W33	56792.00	1
22212 MB C3 W33	5244.00	10	22219 CC W33	10961.00	3	22234 MB C3 W33	58284.00	1
22212 MB W33	5244.00	10	22219 MB C3 W33	11660.00	3	22234 MB W33	58284.00	1
22212K CC C3 W33	5112.00	10	22219 MB W33	11660.00	3	22234K CC W33	56792.00	1
22212K CC W33	5112.00	10	22219K MB C3 W33	11660.00	3	22234K MB C3 W33	58284.00	1
22212K MB C3 W33	5244.00	10	22219K MB W33	11660.00	3	22234K MB W33	58284.00	1
22212K MB W33	5244.00	10	22220 CC C3 W33	12106.00	3	22236 MB C3 W33	62993.00	1
22213 CC C3 W33	5513.00	8	22220 CC W33	12106.00	3	22236 MB W33	62993.00	1
22213 CC W33	5513.00	8	22220 MB C3 W33	13543.00	3	22236K MB C3 W33	62993.00	1
22213 MB C3 W33	5954.00	8	22220 MB W33	13543.00	3	22236K MB W33	62993.00	1
22213 MB W33	5954.00	8	22220K CC C3 W33	12106.00	3	22238 CC W33	66240.00	1
22213K CC C3 W33	5513.00	8	22220K CC W33	12106.00	3	22238 MB C3 W33	73601.00	1
22213K CC W33	5513.00	8	22220K MB C3 W33	13543.00	3	22238 MB W33	73601.00	1
22213K MB C3 W33	5954.00	8	22220K MB W33	13543.00	3	22238K MB C3 W33	73601.00	1
22213K MB W33	5954.00	8	22222 CC C3 W33	14292.00	2	22240 MB C3 W33	84070.00	1
22214 CC C3 W33	5743.00	6	22222 CC W33	14292.00	2	22240 MB W33	84070.00	1
22214 CC W33	5743.00	6	22222 MB C3 W33	15091.00	2	22240K CC C3 W33	82866.00	1
22214 MB C3 W33	7120.00	6	22222 MB W33	15091.00	2	22240K MB C3 W33	84070.00	1
22214 MB W33	7120.00	6	22222K CC C3 W33	14292.00	2	22240K MB W33	84070.00	1
22214K CC C3 W33	5743.00	6	22222K CC W33	14292.00	2	22244 MB C3 W33	162755.00	1
22214K CC W33	5743.00	6	22222K MB C3 W33	15091.00	2	22244 MB W33	162755.00	1
22214K MB C3 W33	7120.00	6	22222K MB W33	15091.00	2	22244K MB C3 W33	162755.00	1
22214K MB W33	7120.00	6	22224 CC C3 W33	20113.00	1	22244K MB W33	162755.00	1
22215 CC C3 W33	6407.00	6	22224 CC W33	20113.00	1	22248K MB C3 W33	187370.00	1
22215 CC W33	6407.00	6	22224 MB C3 W33	23875.00	1	22256K MB W33 P6	210853.00	1
22215 MB C3 W33	7073.00	6	22224 MB W33	23875.00	1	22308 MB C3 W33	5679.00	16
22215 MB W33	7073.00	6	22224K CC C3 W33	20113.00	1	22308 MB W33	5679.00	16
22215K CC C3 W33	6407.00	6	22224K CC W33	20113.00	1	22308K MB C3 W33	5679.00	16
22215K CC W33	6407.00	6	22224K MB C3 W33	23875.00	1	22309 CC W33	5634.00	8
22215K MB C3 W33	7073.00	6	22224K MB W33	23875.00	1	22309 MB C3 W33	5931.00	8





BEARING NO.	MRP In Rs.	CASE Qty.	BEARING NO.	MRP In Rs.	CASE Qty.	BEARING NO.	MRP In Rs.	CASE Qty.
22309 MB W33	5931.00	8	22320K MB W33	29213.00	1	22344K CC C3 W33	171336.00	1
22309K MB C3 W33	5931.00	8	22322 CC C3 W33	31435.00	1	22344K CC W33	171336.00	1
22310 MB C3 W33	6657.00	8	22322 CC W33	31435.00	1	22344K MB C3 W33	235847.00	1
22310 MB W33	6657.00	8	22322 MB C3 W33	35395.00	1	22344K MB W33	235847.00	1
22310K MB C3 W33	6657.00	8	22322 MB W33	35395.00	1	22348 CC C3 W33	263101.00	1
22310K MB W33	6657.00	8	22322K CC W33	31435.00	1	22348 CC W33	263101.00	1
22311 CC W33	7854.00	5	22322K MB C3 W33	35395.00	1	22348 MB C3 W33	276947.00	1
22311 MB C3 W33	8265.00	5	22324 CC C3 W33	40784.00	1	22348 MB W33	276947.00	1
22311K MB C3 W33	8265.00	5	22324 CC W33	40784.00	1	22348K CC C3 W33	263101.00	1
22311K MB W33	8265.00	5	22324 MA C4 W33 VS	54910.00	1	22348K CC W33	263101.00	1
22312 MB C3 W33	8801.00	5	22324 MB C3 W33	43950.00	1	22348K MB C3 W33	276975.00	1
22312 MB W33	8801.00	5	22324 MB W33	43950.00	1	22348K MB W33	276975.00	1
22312K CC W33	7997.00	5	22324K MB C3 W33	43950.00	1	22352 CC C3 W33	306924.00	1
22312K MB C3 W33	8801.00	5	22326 MA C4 W33 VS	59920.00	1	22352 CC W33	306924.00	1
22312K MB W33	8801.00	5	22326 MB C3 W33	49353.00	1	22352 MB C3 W33	323076.00	1
22313 CC W33	9992.00	4	22326 MB W33	49353.00	1	22352 MB W33	323076.00	1
22313 MB C3 W33	11104.00	4	22326K MB C3 W33	49353.00	1	22352K CC C3 W33	306924.00	1
22313 MB W33	11104.00	4	22326K MB W33	49353.00	1	22352K CC W33	306924.00	1
22313K CC C3 W33	9992.00	4	22328 MA C4 W33 VS	69328.00	1	22352K MB C3 W33	323076.00	1
22313K CC W33	9992.00	4	22328 MB C3 W33	57105.00	1	22352K MB W33	323076.00	1
22313K MB C3 W33	11104.00	4	22328 MB W33	57105.00	1	22356 CC C3 W33	442333.00	1
22313K MB W33	11104.00	4	22328K CC W33	54252.00	1	22356 CC W33	442333.00	1
22314 MB C3 W33	11568.00	3	22328K MB C3 W33	57105.00	1	22356 MB C3 W33	454709.00	1
22314 MB W33	11568.00	3	22330 MA C4 W33 VS	87428.00	1	22356 MB W33	454709.00	1
22314K MB C3 W33	11568.00	3	22330 MB C3 W33	70723.00	1	22356K CC C3 W33	442333.00	1
22314K MB W33	11568.00	4	22330 MB W33	70723.00	1	22356K CC W33	442333.00	1
22315 CC C3 W33	12875.00	3	22330K MB C3 W33	70723.00	1	22356K MB C3 W33	454709.00	1
22315 CC W33	12875.00	3	22332 MB C3 W33	112880.00	1	22356K MB W33	454709.00	1
22315 MB C3 W33	14489.00	3	22332K MB C3 W33	112880.00	1	22360 CC C3 W33	542259.00	1
22315 MB W33	14489.00	3	22334 MB C3 W33	126340.00	1	22360 CC W33	542259.00	1
22315K MB C3 W33	14489.00	3	22334 MB W33	126340.00	1	22360 MB C3 W33	556927.00	1
22315K MB W33	14489.00	3	22336 MB C3 W33	133260.00	1	22360 MB W33	556927.00	1
22316 CC W33	15565.00	2	22336K MB C3 W33	133260.00	1	22360K CC C3 W33	542259.00	1
22316 MB C3 W33	16380.00	2	22336K MB W33	133260.00	1	22360K CC W33	542259.00	1
22316 MB W33	16380.00	2	22338 CC C3 W33	134468.00	1	22360K MB C3 W33	556927.00	1
22316K MB C3 W33	16380.00	2	22338 CC W33	134468.00	1	22360K MB W33	556927.00	1
22316K MB W33	16380.00	2	22338 MB C3 W33	141543.00	1	23020 MB W33	12585.00	3
22317 CC C3 W33	15144.00	2	22338 MB W33	141543.00	1	23022 CC W33	13104.00	3
22317 CC W33	15144.00	2	22338K CC C3 W33	134468.00	1	23022K MB W33	15238.00	3
22317 MB C3 W33	17183.00	2	22338K CC W33	134468.00	1	23024 CC C3 W33	15420.00	3
22317 MB W33	17183.00	2	22338K MB C3 W33	141543.00	1	23024 MB C3 W33	16871.00	3
22317K MB C3 W33	17183.00	2	22338K MB W33	141543.00	1	23024 MB W33	16871.00	3
22317K MB W33	17183.00	2	22340 CC C3 W33	166849.00	1	23024K MB C3 W33	16871.00	3
22318 MB C3 W33	20086.00	2	22340 CC W33	166849.00	1	23024K MB W33	16871.00	3
22318 MB W33	20086.00	2	22340 MB C3 W33	173725.00	1	23026 CC W33	18524.00	2
22318K MB C3 W33	20086.00	2	22340 MB W33	173725.00	1	23026 MB C3 W33	19498.00	2
22319 CC C3 W33	19389.00	1	22340K CC C3 W33	166849.00	1	23026 MB W33	19498.00	2
22319 CC W33	19389.00	1	22340K CC W33	166849.00	1	23026K MB C3 W33	19498.00	2
22319 MB C3 W33	22249.00	1	22340K MB C3 W33	173725.00	1	23026K MB W33	19498.00	2
22319K MB C3 W33	22249.00	1	22340K MB W33	173725.00	1	23028 MB C3 W33	23277.00	2
22319K MB W33	22249.00	1	22344 CC C3 W33	171336.00	1	23028K MB C3 W33	23277.00	2
22320 MB C3 W33	29213.00	1	22344 CC W33	171336.00	1	23028K MB W33	23277.00	2
22320 MB W33	29213.00	1	22344 MB C3 W33	235847.00	1	23030 CC W33	25042.00	1
22320K MB C3 W33	29213.00	1	22344 MB W33	235847.00	1	23030 MB C3 W33	26464.00	2



BEARING NO.	MRP In Rs.	CASE Qty.	BEARING NO.	MRP In Rs.	CASE Qty.	BEARING NO.	MRP In Rs.	CASE Qty.
23030 MB W33	26464.00	1	23052 CC W33	97634.00	1	23130K MB W33	38994.00	1
23030K CC C3 W33	25042.00	1	23052 MB C3 W33	103135.00	1	23132 CC W33	42996.00	1
23030K CC W33	25042.00	1	23052 MB W33	103135.00	1	23132 MB C3 W33	44177.00	1
23030K MB C3 W33	26464.00	1	23052K CC C3 W33	97634.00	1	23132 MB W33	44177.00	1
23030K MB W33	26464.00	1	23052K CC W33	97634.00	1	23132K MB C3 W33	44177.00	1
23032 MB C3 W33	31030.00	1	23052K MB C3 W33	103135.00	1	23132K MB W33	44177.00	1
23032 MB W33	31030.00	1	23052K MB W33	103135.00	1	23134 CC W33	48383.00	1
23032K MB C3 W33	31030.00	1	23056 CC C3 W33	109093.00	1	23134 MB C3 W33	50932.00	1
23032K MB W33	31030.00	1	23056 CC W33	109093.00	1	23134 MB W33	50932.00	1
23034 CC C3 W33	32678.00	1	23056 MB C3 W33	115052.00	1	23134K MB C3 W33	50932.00	1
23034 MB C3 W33	36305.00	1	23056 MB W33	115052.00	1	23134K MB W33	50932.00	1
23034 MB W33	36305.00	1	23056K CC C3 W33	109093.00	1	23136 MB C3 W33	62762.00	1
23034K CC W33	32678.00	1	23056K CC W33	109093.00	1	23136 MB W33	62762.00	1
23034K MB C3 W33	36305.00	1	23056K MB C3 W33	115052.00	1	23136K MB C3 W33	62762.00	1
23036 CC C3 W33	40393.00	1	23056K MB W33	115052.00	1	23136K MB W33	62762.00	1
23036 MB C3 W33	44076.00	1	23060 CC C3 W33	148514.00	1	23138 CC C3 W33	64086.00	1
23036 MB W33	44076.00	1	23060 CC W33	148514.00	1	23138 CC W33	64086.00	1
23036K CC C3 W33	40393.00	1	23060 MB C3 W33	157223.00	1	23138 MB C3 W33	67459.00	1
23036K CC W33	40393.00	1	23060 MB W33	157223.00	1	23138 MB W33	67459.00	1
23036K MB C3 W33	44076.00	1	23060K CC C3 W33	148514.00	1	23138K CC C3 W33	64088.00	1
23036K MB W33	44076.00	1	23060K CC W33	148514.00	1	23138K CC W33	64088.00	1
23038 CC C3 W33	44554.00	1	23060K MB C3 W33	157223.00	1	23138K MB C3 W33	67459.00	1
23038 CC W33	44554.00	1	23060K MB W33	157223.00	1	23138K MB W33	67459.00	1
23038 MB C3 W33	45379.00	1	23064 MB C3 W33	171683.00	1	23140 CC C3 W33	85668.00	1
23038 MB W33	45379.00	1	23064 MB W33	171683.00	1	23140 CC W33	85668.00	1
23038K CC C3 W33	44967.00	1	23064K MB C3 W33	171683.00	1	23140 MB C3 W33	89842.00	1
23038K CC W33	44967.00	1	23064K MB W33	171683.00	1	23140 MB W33	89842.00	1
23038K MB C3 W33	45435.00	1	23068 MB C3 W33	182088.00	1	23140K CC C3 W33	85668.00	1
23038K MB W33	45435.00	1	23068 MB W33	182088.00	1	23140K CC W33	85668.00	1
23040 CC C3 W33	51796.00	1	23068K MB C3 W33	182088.00	1	23140K MB C3 W33	89842.00	1
23040 CC W33	51796.00	1	23068K MB W33	182088.00	1	23140K MB W33	89842.00	1
23040 MB C3 W33	53172.00	1	23072 MB C3 W33	246606.00	1	23144 MB C3 W33	109093.00	1
23040 MB W33	53172.00	1	23072 MB W33	246606.00	1	23144 MB W33	109093.00	1
23040K CC C3 W33	51796.00	1	23072 MB C3 W33 P6	246606.00	1	23144K MB C3 W33	109093.00	1
23040K CC W33	51796.00	1	23120 MB C3 W33	17110.00	2	23144K MB W33	109093.00	1
23040K MB C3 W33	53172.00	1	23120 MB W33	17110.00	2	23148 CC C3 W33	118880.00	1
23040K MB W33	53172.00	1	23122 MB C3 W33	18731.00	2	23148 CC W33	118880.00	1
23044 CC C3 W33	56839.00	1	23122 MB W33	18731.00	2	23148 MB C3 W33	131554.00	1
23044 CC W33	56839.00	1	23122K MB W33	18731.00	2	23148 MB W33	131554.00	1
23044 MB C3 W33	59829.00	1	23124 MB C3 W33	29263.00	2	23148K CC C3 W33	118880.00	1
23044 MB W33	59829.00	1	23124 MB W33	29263.00	2	23148K CC W33	118880.00	1
23044K CC C3 W33	56839.00	1	23124K MB C3 W33	29263.00	2	23148K MB C3 W33	131554.00	1
23044K CC W33	56839.00	1	23124K MB W33	29263.00	2	23148K MB W33	131554.00	1
23044K MB C3 W33	59829.00	1	23126 MB C3 W33	35772.00	2	23152 CC C3 W33	169755.00	1
23044K MB W33	59829.00	1	23126K MB C3 W33	35772.00	2	23152 CC W33	169755.00	1
23048 CC C3 W33	74257.00	1	23128 CC C3 W33	33022.00	2	23152 MB C3 W33	178689.00	1
23048 CC W33	74257.00	1	23128 CC W33	33022.00	2	23152 MB W33	178689.00	1
23048 MB C3 W33	78382.00	1	23128 MB C3 W33	34357.00	2	23152K CC C3 W33	169755.00	1
23048 MB W33	78382.00	1	23128K CC C3 W33	33022.00	2	23152K CC W33	169755.00	1
23048K CC C3 W33	74257.00	1	23128K CC W33	33022.00	2	23152K MB C3 W33	178689.00	1
23048K CC W33	74257.00	1	23128K MB C3 W33	34357.00	2	23152K MB W33	178689.00	1
23048K MB C3 W33	78382.00	1	23128K MB W33	34357.00	2	23156 CC C3 W33	214500.00	1
23048K MB W33	78382.00	1	23130 MB C3 W33	38994.00	1	23156 CC W33	214500.00	1
23052 CC C3 W33	97634.00	1	23130 MB W33	38994.00	1	23156 MB C3 W33 P6	218187.00	1





BEARING NO.	MRP In Rs.	CASE Qty.	BEARING NO.	MRP In Rs.	CASE Qty.	BEARING NO.	MRP In Rs.	CASE Qty.
23156 MB W33	218187.00	1	23234 CC W33	74729.00	1	23252K MB W33	291069.00	1
23156K CC C3 W33	214500.00	1	23234 MB C3 W33	76549.00	1	23256 CC C3 W33	306195.00	1
23156K CC W33	214500.00	1	23234 MB W33	76549.00	1	23256 CC W33	306195.00	1
23156K MB C3 W33	218187.00	1	23234K CC C3 W33	74729.00	1	23256 MB C3 W33	323155.00	1
23156K MB W33	218187.00	1	23234K CC W33	74729.00	1	23256 MB W33	323155.00	1
23160 MB C3 W33	280985.00	1	23234K MB C3 W33	76549.00	1	23256K CC C3 W33	306195.00	1
23160 MB W33	280985.00	1	23234K MB W33	76549.00	1	23256K CC W33	306195.00	1
23160K MB C3 W33	280985.00	1	23236 CC C3 W33	80216.00	1	23256K MB C3 W33 P6	323155.00	1
23160K MB W33	280985.00	1	23236 CC W33	80216.00	1	23256K MB W33	323155.00	1
23164 MB C3 W33	352033.00	1	23236 MB C3 W33	84800.00	1	23260 MB C3 W33	400593.00	1
23164 MB W33	352033.00	1	23236 MB W33	84800.00	1	23260 MB W33	400593.00	1
23164K MB C3 W33	352033.00	1	23236K CC C3 W33	80216.00	1	23260K MB C3 W33	400593.00	1
23164K MB W33	352033.00	1	23236K CC W33	80216.00	1	23260K MB W33	400593.00	1
23168 MB C3 W33	448292.00	1	23236K MB C3 W33	84800.00	1	23264 MB C3 W33	501922.00	1
23168 MB W33	448292.00	1	23236K MB W33	84800.00	1	23264 CA W33	501922.00	1
23168K MB C3 W33	448292.00	1	23238 CC C3 W33	94884.00	1	23264K MB C3 W33	501922.00	1
23168K MB W33	448292.00	1	23238 CC W33	94884.00	1	23264K MB W33	501922.00	1
23172 MB C3 W33	467085.00	1	23238 MB C3 W33	99926.00	1	23264K MB C3 W33 P6	579213.00	1
23172 MB W33	467085.00	1	23238 MB W33	99926.00	1	23268 MB W33	579213.00	1
23172K MB C3 W33	467085.00	1	23238K CC C3 W33	94884.00	1	23268K MB C3 W33	579213.00	1
23172K MB W33	467085.00	1	23238K CC W33	94884.00	1	23268K MB W33	579213.00	1
23218 MB C3 W33	15229.00	3	23238K MB C3 W33	99926.00	1	23272 MB C3 W33	688481.00	1
23218 MB W33	15229.00	3	23238K MB W33	99926.00	1	23272 MB W33	688481.00	1
23218K MB W33	15229.00	3	23240 CC C3 W33	111844.00	1	23272K MB C3 W33	688481.00	1
23220 CC C3 W33	20450.00	2	23240 CC W33	111844.00	1	23272K MB W33	688481.00	1
23220 MB C3 W33	21870.00	2	23240 MB C3 W33	120095.00	1	24024 MB C3 W33	17168.00	2
23220K CC C3 W33	20450.00	1	23240 MB W33	120095.00	1	24026 CC C3 W33	20999.00	2
23220K CC W33	20450.00	2	23240K CC C3 W33	111844.00	1	24026 MB C3 W33	21098.00	2
23220K MB C3 W33	21870.00	2	23240K CC W33	111844.00	1	24028 MB C3 W33	24151.00	2
23222 MB C3 W33	25803.00	1	23240K MB C3 W33	120095.00	1	24028 MB W33	24151.00	2
23222 MB W33	25803.00	1	23240K MB W33	120095.00	1	24030 MB C3 W33	19791.00	1
23222K MB C3 W33	25803.00	2	23244 CC C3 W33	159056.00	1	24030 MB W33	19791.00	1
23222K MB W33	25803.00	2	23244 CC W33	159056.00	1	24030E K30 MB C3 W33	19791.00	1
23224 MB C3 W33	29462.00	1	23244 MB C3 W33	165015.00	1	24030E MB C3 W33	19791.00	1
23224 MB W33	29462.00	1	23244 MB W33	165015.00	1	24030E MB W33	19791.00	1
23224K MB C3 W33	29462.00	2	23244K CC C3 W33	159056.00	1	24030K MB C3 W33	19791.00	1
23224K MB W33	29462.00	2	23244K CC W33	159056.00	1	24030K30 MB C3 W33	19791.00	1
23226 MB C3 W33	33031.00	1	23244K MB C3 W33	165015.00	1	24032 MB C3 W33	21959.00	1
23226 MB W33	33031.00	1	23244K MB W33	165015.00	1	24032E K30 MB C3 W33	21959.00	1
23226K MB C3 W33	33031.00	2	23248 CC C3 W33	223229.00	1	24032E MB C3 W33	21959.00	1
23228 CC W33	31377.00	1	23248 CC W33	223229.00	1	24032K MB C3 W33	21959.00	1
23228 MB C3 W33	37709.00	1	23248 MB C3 W33	229188.00	1	24032K30 MB C3 W33	21959.00	1
23228K MB C3 W33	37709.00	1	23248 MB W33	229188.00	1	24034 CC C3 W33	36460.00	1
23228K MB W33	37709.00	1	23248K CC C3 W33	223229.00	1	24034 MB C3 W33	38389.00	1
23230 MB C3 W33	54037.00	1	23248K CC W33	223229.00	1	24034K30 MB C3 W33	38389.00	1
23230 MB W33	54037.00	1	23248K MB C3 W33	229188.00	1	24036 CC W33	45160.00	1
23230K MB C3 W33	54037.00	1	23248K MB W33	229188.00	1	24036 MB C3 W33	47539.00	1
23230K MB W33	54037.00	1	23252 CC C3 W33	282818.00	1	24036K30 MB C3 W33	47539.00	1
23232 CC C4 W33 P6	64683.00	1	23252 CC W33	282818.00	1	24040 MB C3 W33	64362.00	1
23232 MB C3 W33	72287.00	1	23252 MB C3 W33	291069.00	1	24040 MB W33	64362.00	1
23232 MB W33	72287.00	1	23252 MB W33	291069.00	1	24040K30 MB C3 W33	64362.00	1
23232K MB C3 W33	72287.00	1	23252K CC C3 W33	282818.00	1	24044 CC C3 W33	79078.00	1
23232K MB W33	72287.00	1	23252K CC W33	282818.00	1	24044 CC W33	79078.00	1
23234 CC C3 W33	74729.00	1	23252K MB C3 W33	291069.00	1	24044 MB C3 W33	83240.00	1



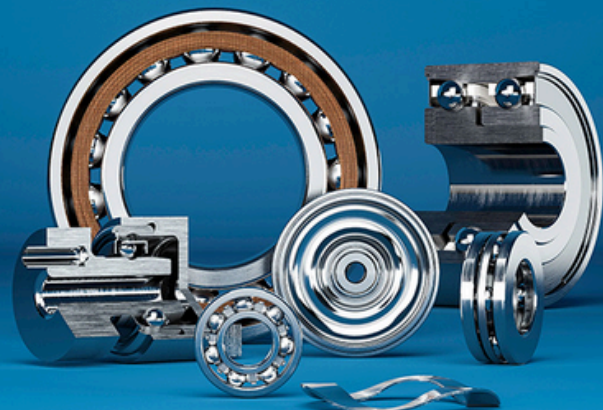
BEARING NO.	MRP In Rs.	CASE Qty.	BEARING NO.	MRP In Rs.	CASE Qty.	BEARING NO.	MRP In Rs.	CASE Qty.
24044 MB W33	83240.00	1	24134 MB W33	64631.00	1	24160 MB W33	368076.00	1
24044K30 CC C3 W33	79078.00	1	24134K30 CC C3 W33	62798.00	1	24160K30 MB C3 W33	368076.00	1
24044K30 CC W33	79078.00	1	24134K30 CC W33	62798.00	1	24160K30 MB W33	368076.00	1
24044K30 MB C3 W33	83240.00	1	24134K30 MB C3 W33	64631.00	1	SPHERICAL ROLLER PLAIN BEARINGS		
24044K30 MB W33	83240.00	1	24134K30 MB W33	64631.00	1	GE20ES	442.00	150
24048 CC C3 W33	88633.00	1	24136 CC C3 W33	75174.00	1	GE20ES-2RS	505.00	150
24048 CC W33	88633.00	1	24136 CC W33	75174.00	1	GE25ES	609.00	112
24048 MB C3 W33	93298.00	1	24136 MB C3 W33	78932.00	1	GE25ES-2RS	716.00	112
24048 MB W33	93298.00	1	24136 MB W33	78932.00	1	GE30ES	726.00	72
24048K30 CC C3 W33	88633.00	1	24136K30 CC C3 W33	75174.00	1	GE30ES-2RS	821.00	72
24048K30 CC W33	88633.00	1	24136K30 CC W33	75174.00	1	GE35ES	925.00	45
24048K30 MB C3 W33	93298.00	1	24136K30 MB C3 W33	78932.00	1	GE35ES-2RS	1052.00	45
24048K30 MB W33	93298.00	1	24136K30 MB W33	78932.00	1	GE40ES	1177.00	36
24052 CC C3 W33	125866.00	1	24138 CC C3 W33	88467.00	1	GE40ES-2RS	1345.00	36
24052 CC W33	125866.00	1	24138 CC W33	88467.00	1	GE45ES	1419.00	27
24052 MB C3 W33	132491.00	1	24138 MB C3 W33	91217.00	1	GE45ES-2RS	1598.00	27
24052 MB W33	132491.00	1	24138 MB W33	91217.00	1	GE50ES	1808.00	18
24052K30 CC C3 W33	125866.00	1	24138K30 CC C3 W33	89383.00	1	GE50ES-2RS	2060.00	18
24052K30 CC W33	125866.00	1	24138K30 CC W33	89383.00	1	GE70ES	3339.00	6
24052K30 MB C3 W33	132491.00	1	24138K30 MB C3 W33	91217.00	1	SPHERICAL ROLLER THRUST BEARING		
24052K30 MB W33	132491.00	1	24138K30 MB W33	91217.00	1	29320E	27379.00	3
24056 CC C3 W33 P6	151567.00	1	24140 CC C3 W33	92409.00	1	29322E	30588.00	1
24056 CC W33	151567.00	1	24140 CC W33	92409.00	1	29322EM	32743.00	1
24056 MB C3 W33	159544.00	1	24140 MB C3 W33	107718.00	1	29324E	35560.00	1
24056 MB W33	159544.00	1	24140 MB W33	107718.00	1	29324M	35882.00	1
24056K30 CC C3 W33 P6	151567.00	1	24140K30 CC C3 W33	92409.00	1	29326E	39926.00	1
24056K30 CC W33	151567.00	1	24140K30 CC W33	92409.00	1	29326M	40775.00	1
24056K30 MB C3 W33 P6	159544.00	1	24140K30 MB C3 W33	107718.00	1	29328E	40984.00	1
24056K30 MB W33	159544.00	1	24140K30 MB W33	107718.00	1	29328EM	41833.00	1
24060 CC C3 W33	192753.00	1	24144 CC C3 W33	137054.00	1	29330E	47315.00	1
24060 CC W33	192753.00	1	24144 CC W33	137054.00	1	29330EM	52800.00	1
24060 MB C3 W33	202898.00	1	24144 MB C3 W33	148018.00	1	29332M	73535.00	1
24060 MB W33	202898.00	1	24144 MB W33	148018.00	1	29336E	97573.00	1
24060K30 CC C3 W33	192753.00	1	24144K30 CC C3 W33	137054.00	1	29336EM	102451.00	1
24060K30 CC W33	192753.00	1	24144K30 CC W33	137054.00	1	29338EM	121966.00	1
24060K30 MB C3 W33	202898.00	1	24144K30 MB C3 W33	148018.00	1	29412E	19546.00	5
24060K30 MB W33	202898.00	1	24144K30 MB W33	148018.00	1	29412EM	22864.00	5
24064 MB C3 W33	241564.00	1	24148 CC C3 W33	169599.00	1	29414E	22077.00	1
24064 MB W33	241564.00	1	24148 CC W33	169599.00	1	29414M	27093.00	3
24064K MB C3 W33 P6	241564.00	1	24148 MB C3 W33	174641.00	1	29416E	24929.00	2
24064K MB W33	241564.00	1	24148 MB W33	174641.00	1	29416M	28960.00	2
24068 MB C3 W33	313529.00	1	24148K30 CC C3 W33	169599.00	1	29418E	29989.00	1
24068 MB W33	313529.00	1	24148K30 CC W33	169599.00	1	29418M	31488.00	2
24068K30 MB C3 W33	313529.00	1	24148K30 MB C3 W33	174641.00	1	29420E	36930.00	1
24068K30 MB W33	313529.00	1	24148K30 MB W33	174641.00	1	29420EM	38776.00	1
24072 MB C3 W33	332781.00	1	24152 MB C3 W33	253024.00	1	29422E	52526.00	1
24072 MB W33	332781.00	1	24152 MB W33	253024.00	1	29422EM	57775.00	2
24072K30 MB C3 W33	332781.00	1	24152K30 MB C3 W33	253024.00	1	29424E	65969.00	1
24072K30 MB W33	332781.00	1	24152K30 MB W33	253024.00	1	29424EM	72784.00	1
24122 MB W33	27011.00	2	24156 MB C3 W33	275942.00	1	29426E	58380.00	1
24124 MB W33	29626.00	1	24156 MB W33	275942.00	1	29426EM	61290.00	1
24134 CC C3 W33	62798.00	1	24156K30 MB C3 W33 P6	275942.00	1	29430E	74346.00	1
24134 CC W33	62798.00	1	24156K30 MB W33	275942.00	1	29430EM	83781.00	1
24134 MB C3 W33	64631.00	1	24160 MB C3 W33	368076.00	1	29432E	75221.00	1



BEARING NO.	MRP In Rs.	CASE Qty.	BEARING NO.	MRP In Rs.	CASE Qty.	BEARING NO.	MRP In Rs.	CASE Qty.
29434E	105172.00	1	H2328	8674.00	1	H3122	3238.00	2
29436E	113681.00	1	H3024	3800.00	1	H3124	3456.00	2
ADAPTER SLEEVES			H3026	5300.00	1	H3126	4564.00	2
H207	257.00	45	H3028	5396.00	1	H3128	5478.00	1
H209	309.00	24	H3032	9631.00	1	H3130	8496.00	1
H210	381.00	24	H3034	11075.00	1	H3132	10678.00	1
H211	402.00	12	H3036	13395.00	1	H3134	12377.00	1
H212	489.00	12	H3038	14830.00	1	H3136	14056.00	1
H213	545.00	10	H3044	26961.00	1	H3140	20644.00	1
H216	875.00	4	H3048	33534.00	1	H3144	31600.00	1
H217	1125.00	4	H307	275.00	24	H3148	38612.00	1
H2309	424.00	12	H308	309.00	21	HE209	309.00	24
H2310	471.00	12	H309	323.00	24	HE2309	424.00	12
H2311	500.00	12	H310	384.00	24	HE2310	471.00	12
H2312	581.00	4	H311	400.00	12	HE2311	500.00	12
H2313	661.00	4	H312	511.00	12	HE2313	661.00	4
H2314	931.00	4	H313	594.00	10	HE2317	1679.00	1
H2315	1098.00	4	H314	739.00	4	HE309	323.00	24
H2316	1406.00	4	H315	821.00	4	HE311	400.00	12
H2317	1514.00	2	H316	990.00	4	HE312	511.00	12
H2318	1844.00	2	H317	1071.00	4	HE313	594.00	10
H2319	2163.00	2	H318	1473.00	4	HE315	821.00	4
H2320	2416.00	2	H319	1759.00	2	HE317	1071.00	4
H2322	2963.00	1	H320	1899.00	2	OH3044H	40210	1
H2324	6435.00	1	H322	2185.00	2	OH3164H	145318	1

Notes :

This Price list supersede all previous Price lists.



Logistics and Delivery



Techno Trade Mart's logistics system is designed to ensure reliable, on-time delivery of spare parts, machinery, tools, and equipment across India. Our logistics approach is structured to handle the unique challenges of transporting both small, delicate parts and larger, heavy-duty machinery.

1. Specialized Handling and Packing

- **Spare Parts:** Packaged in protective, moisture-proof packaging with padding to prevent damage. Smaller components are grouped and labeled to streamline inventory management.
- **Machinery and Equipment:** Secured in sturdy, shock-resistant crates and cushioned packaging to prevent movement and damage during transit.
- **Tools:** Organized into kits or boxes, with clear labeling to allow easy identification upon arrival.

2. Warehousing and Inventory Management

- We maintain spacious, well-organized warehouses with climate control and humidity regulation to protect sensitive equipment and tools.
- Advanced inventory management ensures that each item is trackable, so clients receive timely updates on stock levels and order availability.

3. Efficient Distribution Network

- Partnering with reliable transport services enables us to reach customers across urban and remote locations nationwide.
- For urgent orders, we offer expedited shipping options, ensuring fast delivery when clients need quick replacements or urgent supplies.

4. Real-Time Tracking and Order Visibility

- Every shipment is equipped with real-time tracking, allowing clients to monitor their orders from dispatch to delivery.
- Automated notifications keep clients informed at each stage of transit, ensuring transparency and predictability.



Logistics and Delivery



5. Skilled Logistics Team for On-Site Delivery

- For large machinery and equipment, our trained logistics team manages on-site delivery, unloading, and even placement if needed, ensuring the equipment arrives safely and is ready for immediate installation.

6. Scalable for Bulk and Customized Orders

- We can handle both single-item orders and bulk shipments with flexibility, customizing logistics to accommodate unique needs, including special transportation for oversized or high-value equipment.

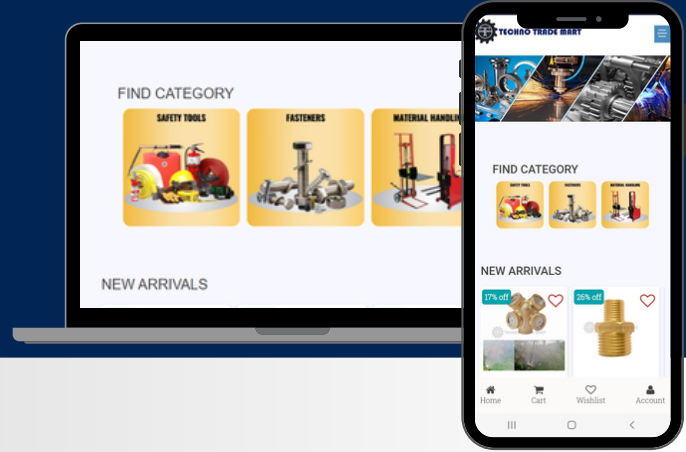
7. Reverse Logistics

- Our system includes efficient reverse logistics for returns, repairs, or replacements, helping clients manage faulty or redundant parts with minimal hassle.

Techno Trade Mart's logistics capabilities ensure that spare parts, machinery, tools, and equipment arrive on time, intact, and ready for immediate use, supporting industrial clients in maintaining smooth and efficient operations.



Process for Place Order



Techno Trade Mart's order placement process is streamlined for convenience and efficiency, making it easy for clients to place orders and receive products on time. Here's how the process works:

1. Browse Products

- **Online Catalog:** Clients can browse our product categories on our website (technotrademart.com) to view available fasteners, spare parts, tools, and equipment. Each item has detailed specifications to help clients select the right products.

2. Request for Quotation (RFQ)

- **Submit RFQ:** For bulk or customized orders, clients can submit an RFQ directly through the website or by contacting our sales team. Include product details, quantity, and any specific requirements.
- **Quotation and Lead Time:** Our team will respond promptly with a detailed quotation, including pricing, lead time, and any applicable discounts.

3. Confirm Order

- **Review and Confirm:** Once the client reviews the quotation and finalizes product specifications, they can confirm the order via email or phone.
- **Purchase Order (PO):** Clients may need to provide a formal PO document if required by their procurement process.

4. Order Processing

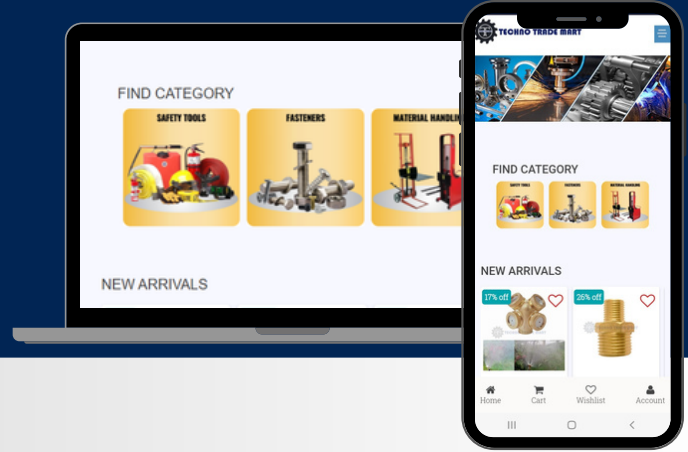
- **Inventory Check and Production Scheduling:** For standard products, we proceed with dispatch from our inventory. For custom orders, production scheduling begins, and clients receive an estimated completion date.
- **Quality Assurance:** Before shipping, all products undergo quality checks to ensure they meet specifications.

5. Payment Options

- **Flexible Payment Terms:** Clients can choose from various payment options, including online payments, bank transfers, or other arrangements discussed at the time of order confirmation.



Process for Place Order



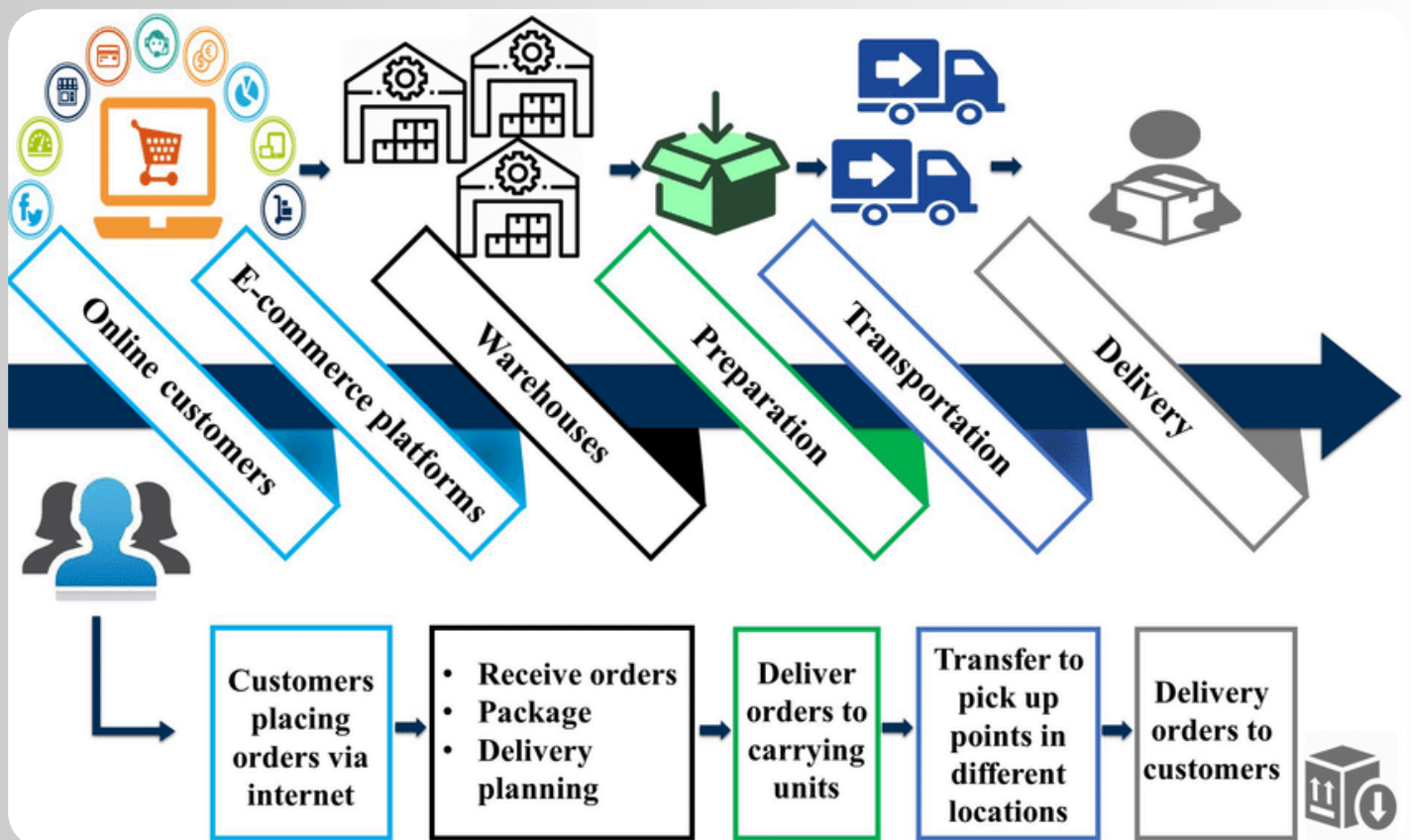
6. Shipment and Delivery

- Packaging and Dispatch: Our logistics team securely packages the order and dispatches it as per the scheduled delivery date.
- Real-Time Tracking: Clients receive tracking information to monitor the shipment's status, ensuring transparency.

7. Order Completion and Follow-Up

- Delivery Confirmation: After delivery, we confirm with the client to ensure all items meet expectations and provide support if needed.
- Post-Sales Support: Our team remains available for any questions regarding installation, usage, or further orders.

This seamless process ensures clients receive their orders quickly, reliably, and with full support at every stage.



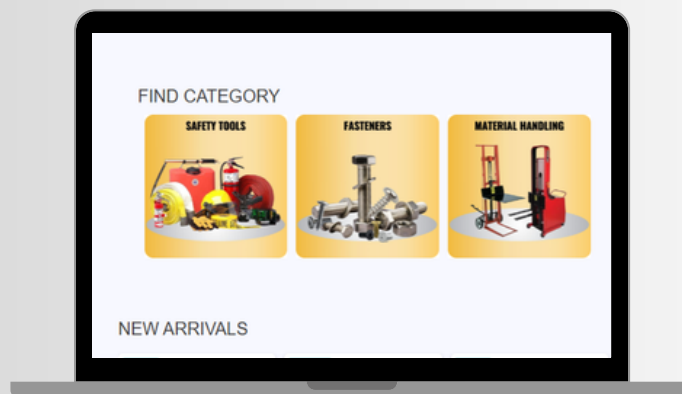
Contact Us



TECHNO TRADE MART™

A unit of Techgenics Engineering and Consulting Private Limited

CIN :U72900JH2022PTC019637 GSTIN:20AAJCT8111HIZM



Download App



Browse Website

Email: orders@technotrademart.com | support@technotrademart.com

Enquiry : +91-9470962850 | Order: 011-69311818 | Support: 0657-4501342



Head Office : 4th Floor Ansal Tower, Nehru Place, New Delhi, Delhi 11001

Registered Office: 302, Kasidih, Jamshedpur, Jharkhand India 831001



www.technotrademart.com